



[Go to Product page](#)

Datasheet for ABIN951099

anti-CCDC17 antibody (C-Term)

3 Images

Overview

Quantity:	0.4 mL
Target:	CCDC17
Binding Specificity:	AA 439-477, C-Term
Reactivity:	Human
Host:	Rabbit
Clonality:	Polyclonal
Application:	Western Blotting (WB), Flow Cytometry (FACS), Immunohistochemistry (Paraffin-embedded Sections) (IHC (p)), Enzyme Immunoassay (EIA)

Product Details

Immunogen:	KLH conjugated synthetic peptide between 439-477 amino acids from the C-terminal region of human CCDC17
Isotype:	Ig Fraction
Specificity:	This antibody reacts to CCDC17.
Cross-Reactivity (Details):	Species reactivity (tested):Human.
Purification:	Affinity chromatography on Protein A

Target Details

Target:	CCDC17
Alternative Name:	CCDC17 (CCDC17 Products)

Target Details

Background: Synonyms: Coiled-coil domain-containing protein 17

Molecular Weight: 67721 Da ,Isoform 47kd Da

Gene ID: 149483

NCBI Accession: [NP_001108410](#)

Application Details

Application Notes: Optimal working dilution should be determined by the investigator.

Restrictions: For Research Use only

Handling

Format: Liquid

Concentration: 0.25 mg/mL

Buffer: PBS, 0.09 % (W/V) sodium azide

Preservative: Sodium azide

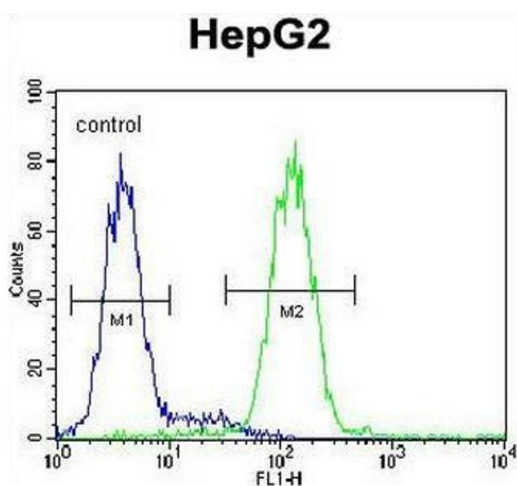
Precaution of Use: This product contains sodium azide: a POISONOUS AND HAZARDOUS SUBSTANCE which should be handled by trained staff only.

Handling Advice: Avoid repeated freezing and thawing.

Storage: 4 °C/-20 °C

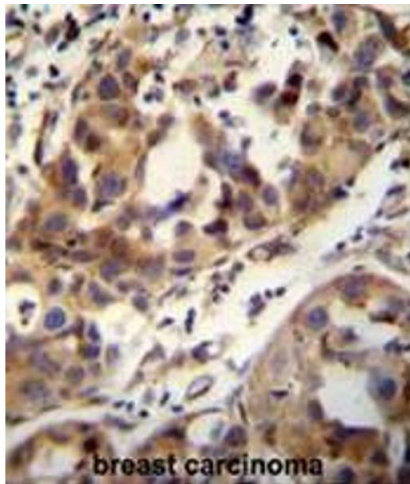
Storage Comment: Store undiluted at 2-8 °C for one month or (in aliquots) at -20 °C for longer.

Images



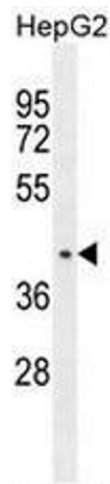
Flow Cytometry

Image 1. CCDC17 Antibody (C-term) flow cytometric analysis of HepG2 cells (right histogram) compared to a negative control cell (left histogram). FITC-conjugated goat-anti-rabbit secondary antibodies were used for the analysis.



Immunohistochemistry (Paraffin-embedded Sections)

Image 2. CCDC17 antibody (C-term) immunohistochemistry analysis in formalin fixed and paraffin embedded human breast carcinoma followed by peroxidase conjugation of the secondary antibody and DAB staining. This data demonstrates the use of the CCDC17 antibody (C-term) for immunohistochemistry. Clinical relevance has not been evaluated.



Western Blotting

Image 3. CCDC17 Antibody (C-term) western blot analysis in HepG2 cell line lysates (35µg/lane). This demonstrates the CCDC17 antibody detected the CCDC17 protein (arrow).