



[Go to Product page](#)

Datasheet for ABIN951100  
**anti-CCDC19 antibody (N-Term)**

2 Images

Overview

Quantity:	0.4 mL
Target:	CCDC19
Binding Specificity:	AA 113-143, N-Term
Reactivity:	Human
Host:	Rabbit
Clonality:	Polyclonal
Conjugate:	This CCDC19 antibody is un-conjugated
Application:	Western Blotting (WB), Immunohistochemistry (Paraffin-embedded Sections) (IHC (p)), Enzyme Immunoassay (EIA)

Product Details

Immunogen:	KLH conjugated synthetic peptide between 113-143 amino acids from the N-terminal region of human CCDC19
Isotype:	Ig Fraction
Specificity:	This antibody reacts to CCDC19.
Cross-Reactivity (Details):	Species reactivity (tested):Human.
Purification:	Affinity chromatography on Protein A

Target Details

Target:	CCDC19
---------	--------

## Target Details

---

Alternative Name:	CCDC19 ( <a href="#">CCDC19 Products</a> )
Background:	Synonyms: Coiled-coil domain-containing protein 19, NESG1, Nasopharyngeal epithelium-specific protein 1
Molecular Weight:	65730 Da
Gene ID:	25790
NCBI Accession:	<a href="#">NP_036469</a>

## Application Details

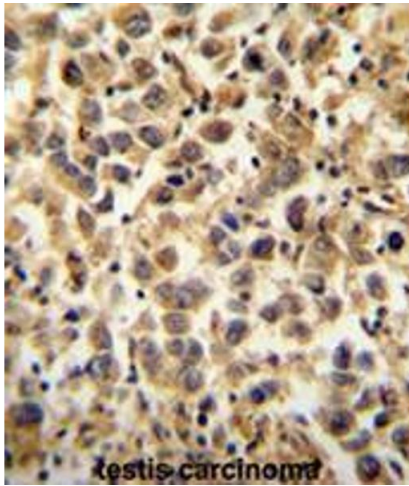
---

Application Notes:	Optimal working dilution should be determined by the investigator.
Restrictions:	For Research Use only

## Handling

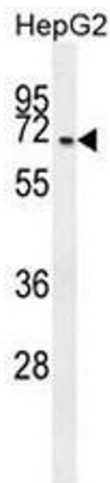
---

Format:	Liquid
Concentration:	0.25 mg/mL
Buffer:	PBS, 0.09 % (W/V) sodium azide
Preservative:	Sodium azide
Precaution of Use:	This product contains sodium azide: a POISONOUS AND HAZARDOUS SUBSTANCE which should be handled by trained staff only.
Handling Advice:	Avoid repeated freezing and thawing.
Storage:	4 °C/-20 °C
Storage Comment:	Store undiluted at 2-8 °C for one month or (in aliquots) at -20 °C for longer.



### Immunohistochemistry (Paraffin-embedded Sections)

**Image 1.** CCDC19 Antibody (N-term) immunohistochemistry analysis in formalin fixed and paraffin embedded human testis carcinoma followed by peroxidase conjugation of the secondary antibody and DAB staining. This data demonstrates the use of the CCDC19 Antibody (N-term) for immunohistochemistry. Clinical relevance has not been evaluated.



### Western Blotting

**Image 2.** CCDC19 Antibody (N-term) western blot analysis in HepG2 cell line lysates (35µg/lane). This demonstrates the CCDC19 antibody detected the CCDC19 protein (arrow).