



[Go to Product page](#)

Datasheet for ABIN951103
anti-CCDC36 antibody (C-Term)

3 Images

Overview

Quantity:	0.4 mL
Target:	CCDC36
Binding Specificity:	AA 419-448, C-Term
Reactivity:	Human
Host:	Rabbit
Clonality:	Polyclonal
Conjugate:	This CCDC36 antibody is un-conjugated
Application:	Western Blotting (WB), Immunofluorescence (IF), Immunohistochemistry (Paraffin-embedded Sections) (IHC (p)), Enzyme Immunoassay (EIA)

Product Details

Immunogen:	KLH conjugated synthetic peptide between 419-448 amino acids from the C-terminal region of human CCDC36
Isotype:	Ig Fraction
Specificity:	This antibody reacts to CCDC36.
Cross-Reactivity (Details):	Species reactivity (tested):Human.
Purification:	Affinity Purified

Target Details

Target:	CCDC36
---------	--------

Target Details

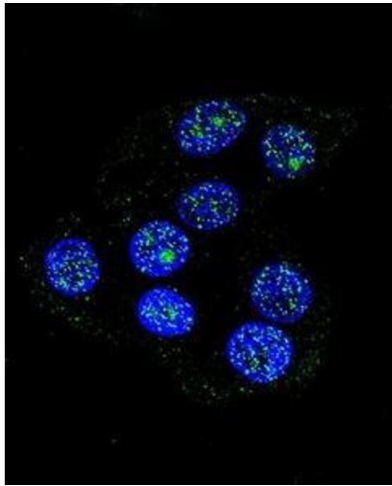
Alternative Name:	CCDC36 (CCDC36 Products)
Background:	Synonyms: Coiled-coil domain-containing protein 36
Molecular Weight:	66343 Da
Gene ID:	339834
NCBI Accession:	NP_001128669

Application Details

Application Notes:	Optimal working dilution should be determined by the investigator.
Restrictions:	For Research Use only

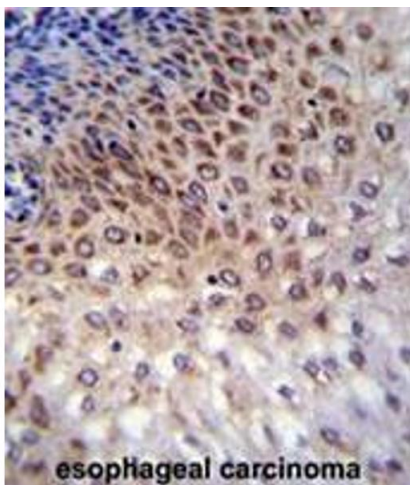
Handling

Format:	Liquid
Concentration:	0.25 mg/mL
Buffer:	PBS, 0.09 % (W/V) sodium azide
Preservative:	Sodium azide
Precaution of Use:	This product contains sodium azide: a POISONOUS AND HAZARDOUS SUBSTANCE which should be handled by trained staff only.
Handling Advice:	Avoid repeated freezing and thawing.
Storage:	4 °C/-20 °C
Storage Comment:	Store undiluted at 2-8 °C for one month or (in aliquots) at -20 °C for longer.



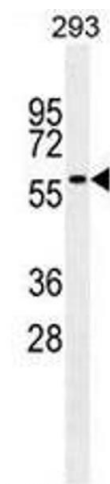
Immunofluorescence

Image 1. Confocal immunofluorescent analysis of CCDC36 Antibody (C-term)(Cat#AP50775PU-N) with 293 cell followed by Alexa Fluor 488-conjugated goat anti-rabbit IgG (green). DAPI was used to stain the cell nuclear (blue).



Immunohistochemistry (Paraffin-embedded Sections)

Image 2. CCDC36 Antibody (C-term) immunohistochemistry analysis in formalin fixed and paraffin embedded human esophageal carcinoma followed by peroxidase conjugation of the secondary antibody and DAB staining. This data demonstrates the use of CCDC36 Antibody (C-term) for immunohistochemistry. Clinical relevance has not been evaluated.



Western Blotting

Image 3. CCDC36 Antibody (C-term) western blot analysis in 293 cell line lysates (35µg/lane). This demonstrates the CCDC36 antibody detected the CCDC36 protein (arrow).