



[Go to Product page](#)

Datasheet for ABIN951105  
**anti-CCDC38 antibody (Middle Region)**

2 Images

Overview

Quantity:	0.4 mL
Target:	CCDC38
Binding Specificity:	AA 359-388, Middle Region
Reactivity:	Human, Mouse
Host:	Rabbit
Clonality:	Polyclonal
Conjugate:	This CCDC38 antibody is un-conjugated
Application:	Western Blotting (WB), Immunohistochemistry (Paraffin-embedded Sections) (IHC (p)), Enzyme Immunoassay (EIA)

Product Details

Immunogen:	KLH conjugated synthetic peptide between 359-388 amino acids from the Central region of human CCDC38
Isotype:	Ig Fraction
Specificity:	This antibody reacts to CCDC38.
Cross-Reactivity (Details):	Species reactivity (tested):Human and Mouse.
Purification:	Affinity chromatography on Protein A

Target Details

Target:	CCDC38
---------	--------

## Target Details

---

Alternative Name:	CCDC38 ( <a href="#">CCDC38 Products</a> )
Background:	Synonyms: Coiled-coil domain-containing protein 38
Molecular Weight:	65315 Da
Gene ID:	120935
NCBI Accession:	<a href="#">NP_872302</a>

## Application Details

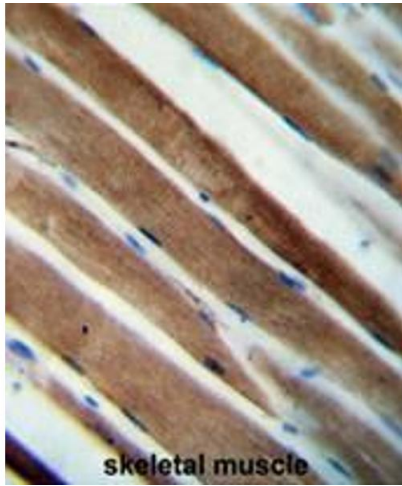
---

Application Notes:	Optimal working dilution should be determined by the investigator.
Restrictions:	For Research Use only

## Handling

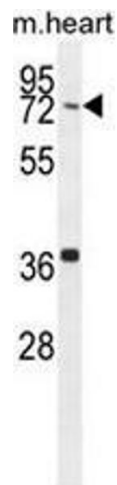
---

Format:	Liquid
Concentration:	0.25 mg/mL
Buffer:	PBS, 0.09 % (W/V) sodium azide
Preservative:	Sodium azide
Precaution of Use:	This product contains sodium azide: a POISONOUS AND HAZARDOUS SUBSTANCE which should be handled by trained staff only.
Handling Advice:	Avoid repeated freezing and thawing.
Storage:	4 °C/-20 °C
Storage Comment:	Store undiluted at 2-8 °C for one month or (in aliquots) at -20 °C for longer.



### Immunohistochemistry (Paraffin-embedded Sections)

**Image 1.** CCDC38 Antibody (Center) immunohistochemistry analysis in formalin fixed and paraffin embedded human skeletal muscle followed by peroxidase conjugation of the secondary antibody and DAB staining. This data demonstrates the use of the CCDC38 Antibody (Center) for immunohistochemistry. Clinical relevance has not been evaluated.



### Western Blotting

**Image 2.** CCDC38 Antibody (Center) western blot analysis in mouse heart tissue lysates (35µg/lane). This demonstrates the CCDC38 antibody detected the CCDC38 protein (arrow).