



[Go to Product page](#)

Datasheet for ABIN951106

anti-CCDC39 antibody (C-Term)

2 Images

Overview

Quantity:	0.4 mL
Target:	CCDC39
Binding Specificity:	AA 770-798, C-Term
Reactivity:	Human, Mouse, Hamster
Host:	Rabbit
Clonality:	Polyclonal
Application:	Western Blotting (WB), Enzyme Immunoassay (EIA)

Product Details

Immunogen:	KLH conjugated synthetic peptide between 770-798 amino acids from the C-terminal region of human CCDC39
Isotype:	Ig Fraction
Specificity:	This antibody reacts to CCDC39.
Cross-Reactivity (Details):	Species reactivity (tested): Human, Hamster and Mouse.
Purification:	Affinity chromatography on Protein A

Target Details

Target:	CCDC39
Alternative Name:	CCDC39 (CCDC39 Products)
Background:	Synonyms: Coiled-coil domain-containing protein 39

Target Details

Molecular Weight: 109901 Da

Gene ID: 339829

NCBI Accession: [NP_852091](#)

Application Details

Application Notes: Optimal working dilution should be determined by the investigator.

Restrictions: For Research Use only

Handling

Format: Liquid

Concentration: 0.25 mg/mL

Buffer: PBS, 0.09 % (W/V) sodium azide

Preservative: Sodium azide

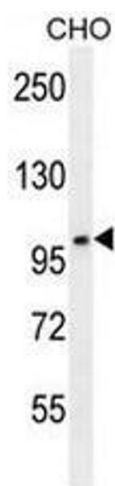
Precaution of Use: This product contains sodium azide: a POISONOUS AND HAZARDOUS SUBSTANCE which should be handled by trained staff only.

Handling Advice: Avoid repeated freezing and thawing.

Storage: 4 °C/-20 °C

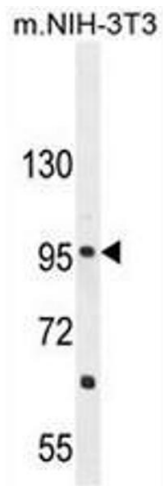
Storage Comment: Store undiluted at 2-8 °C for one month or (in aliquots) at -20 °C for longer.

Images



Western Blotting

Image 1. CCDC39 Antibody (C-term) western blot analysis in CHO cell line lysates (35µg/lane). This demonstrates the CCDC39 antibody detected the CCDC39 protein (arrow).



Western Blotting

Image 2. CCDC39 Antibody (C-term) western blot analysis in mouse NIH-3T3 cell line lysates (35µg/lane). This demonstrates the CCDC39 antibody detected the CCDC39 protein (arrow).