



Datasheet for ABIN951116  
**anti-CCDC61 antibody (N-Term)**



[Go to Product page](#)

2 Images

Overview

Quantity:	0.4 mL
Target:	CCDC61
Binding Specificity:	AA 43-73, N-Term
Reactivity:	Human
Host:	Rabbit
Clonality:	Polyclonal
Conjugate:	This CCDC61 antibody is un-conjugated
Application:	Western Blotting (WB), Flow Cytometry (FACS), Enzyme Immunoassay (EIA)

Product Details

Immunogen:	KLH conjugated synthetic peptide between 43-73 amino acids from the N-terminal region of human CCDC61
Isotype:	Ig Fraction
Cross-Reactivity (Details):	Species reactivity (tested):Human.
Purification:	Affinity chromatography on Protein A

Target Details

Target:	CCDC61
Alternative Name:	CCDC61 ( <a href="#">CCDC61 Products</a> )
Background:	Synonyms: Coiled-coil domain-containing protein 61

## Target Details

Molecular Weight: 53207 Da

Gene ID: 9606

## Application Details

Application Notes: Optimal working dilution should be determined by the investigator.

Restrictions: For Research Use only

## Handling

Format: Liquid

Concentration: 0.25 mg/mL

Buffer: PBS, 0.09 % (W/V) sodium azide

Preservative: Sodium azide

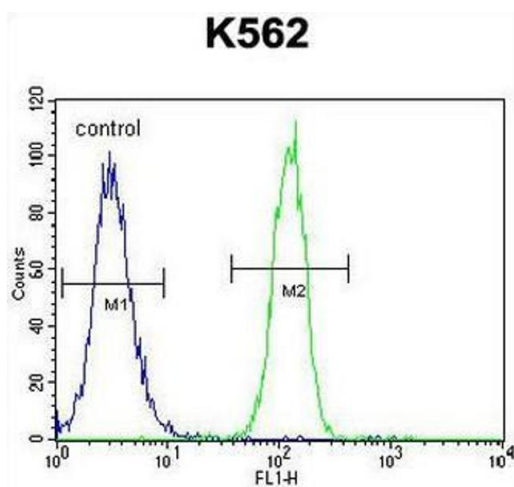
Precaution of Use: This product contains sodium azide: a POISONOUS AND HAZARDOUS SUBSTANCE which should be handled by trained staff only.

Handling Advice: Avoid repeated freezing and thawing.

Storage: 4 °C/-20 °C

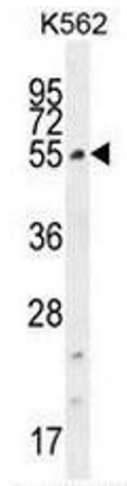
Storage Comment: Store undiluted at 2-8 °C for one month or (in aliquots) at -20 °C for longer.

## Images



### Flow Cytometry

**Image 1.** CCDC61 Antibody (N-term) flow cytometric analysis of K562 cells (right histogram) compared to a negative control cell (left histogram). FITC-conjugated goat-anti-rabbit secondary antibodies were used for the analysis.



### Western Blotting

**Image 2.** CCDC61 Antibody (N-term) western blot analysis in K562 cell line lysates (35µg/lane). This demonstrates the CCDC61 antibody detected the CCDC61 protein (arrow).