



[Go to Product page](#)

Datasheet for ABIN951117

anti-CCDC63 antibody (C-Term)

2 Images

Overview

Quantity:	0.4 mL
Target:	CCDC63
Binding Specificity:	AA 539-563, C-Term
Reactivity:	Human
Host:	Rabbit
Clonality:	Polyclonal
Application:	Western Blotting (WB), Flow Cytometry (FACS), Enzyme Immunoassay (EIA)

Product Details

Immunogen:	KLH conjugated synthetic peptide between 539-563 amino acids from the C-terminal region of human CCDC63
Isotype:	Ig Fraction
Specificity:	This antibody reacts to CCDC63.
Cross-Reactivity (Details):	Species reactivity (tested):Human.
Purification:	Affinity chromatography on Protein A

Target Details

Target:	CCDC63
Alternative Name:	CCDC63 (CCDC63 Products)
Background:	Synonyms: Coiled-coil domain-containing protein 63

Target Details

Molecular Weight:	66250 Da
Gene ID:	160762
NCBI Accession:	NP_689804

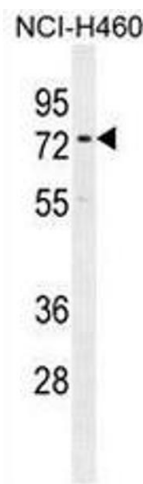
Application Details

Application Notes:	Optimal working dilution should be determined by the investigator.
Restrictions:	For Research Use only

Handling

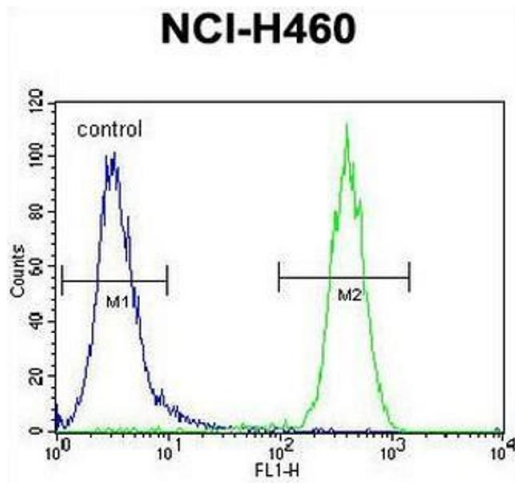
Format:	Liquid
Concentration:	0.25 mg/mL
Buffer:	PBS, 0.09 % (W/V) sodium azide
Preservative:	Sodium azide
Precaution of Use:	This product contains sodium azide: a POISONOUS AND HAZARDOUS SUBSTANCE which should be handled by trained staff only.
Handling Advice:	Avoid repeated freezing and thawing.
Storage:	4 °C/-20 °C
Storage Comment:	Store undiluted at 2-8 °C for one month or (in aliquots) at -20 °C for longer.

Images



Western Blotting

Image 1. CCDC63 Antibody (C-term) western blot analysis in NCI-H460 cell line lysates (35µg/lane). This demonstrates the CCDC63 antibody detected the CCDC63 protein (arrow).



Flow Cytometry

Image 2. CCDC63 Antibody (C-term) flow cytometric analysis of NCI-H460 cells (right histogram) compared to a negative control cell (left histogram). FITC-conjugated goat-anti-rabbit secondary antibodies were used for the analysis.