

Datasheet for ABIN951126
anti-CCDC85B antibody (Middle Region)[Go to Product page](#)

3 Images

Overview

Quantity:	0.4 mL
Target:	CCDC85B
Binding Specificity:	AA 75-105, Middle Region
Reactivity:	Human
Host:	Rabbit
Clonality:	Polyclonal
Conjugate:	This CCDC85B antibody is un-conjugated
Application:	Western Blotting (WB), Flow Cytometry (FACS), Immunohistochemistry (Paraffin-embedded Sections) (IHC (p)), Enzyme Immunoassay (EIA)

Product Details

Immunogen:	KLH conjugated synthetic peptide between 75~105 amino acids from the Center region of human DIPA
Isotype:	Ig Fraction
Specificity:	This antibody recognizes Human CCDC85B / DIPA (Center).
Purification:	Affinity Chromatography on Protein A

Target Details

Target:	CCDC85B
Alternative Name:	CCDC85B / DIPA (CCDC85B Products)

Target Details

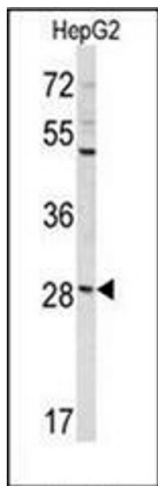
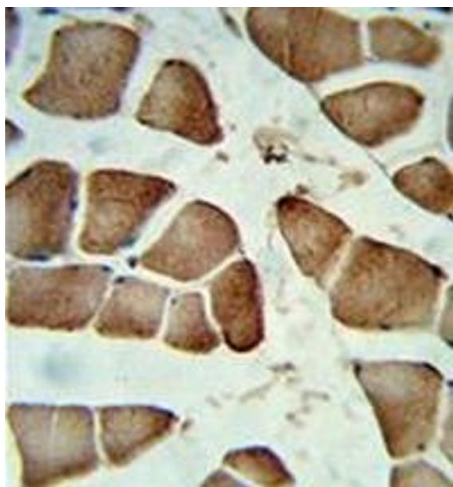
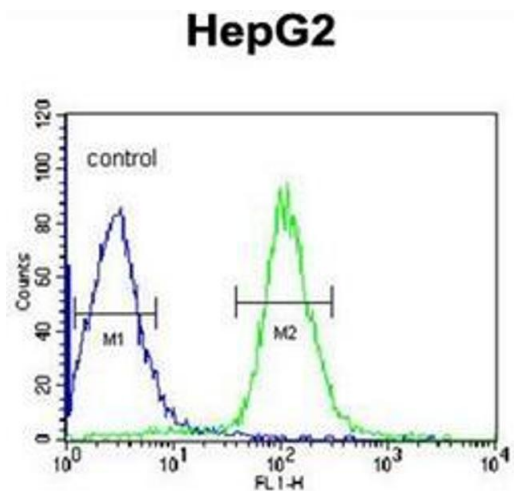
Background:	DIPA functions as a transcriptional repressor. It may inhibit the activity of CTNNB1 in a TP53-dependent manner and thus regulate cell growth. It may function in adipocyte differentiation, negatively regulating mitotic clonal expansion.Synonyms: Coiled-coil domain-containing protein 85B
Molecular Weight:	22091 Da
Gene ID:	11007
NCBI Accession:	NP_006839

Application Details

Application Notes:	Optimal working dilution should be determined by the investigator.
Restrictions:	For Research Use only

Handling

Format:	Liquid
Concentration:	0.25 mg/mL
Buffer:	PBS, 0.09 % Sodium Azide
Preservative:	Sodium azide
Precaution of Use:	This product contains sodium azide: a POISONOUS AND HAZARDOUS SUBSTANCE which should be handled by trained staff only.
Handling Advice:	Avoid repeated freezing and thawing.
Storage:	4 °C/-20 °C
Storage Comment:	Store undiluted at 2-8 °C for one month or (in aliquots) at -20 °C for longer.



Flow Cytometry

Image 1. Flow cytometric analysis of HepG2 cells using DIPA Antibody (right histogram) compared to a negative control cell (left histogram). FITC-conjugated goat-anti-rabbit secondary antibodies were used for the analysis.

Immunohistochemistry (Paraffin-embedded Sections)

Image 2. Formalin-fixed and paraffin-embedded human skeletal muscle reacted with DIPA Antibody , which was peroxidase-conjugated to the secondary antibody, followed by DAB staining.

Western Blotting

Image 3. Western blot analysis of DIPA Antibody in HepG2 cell line lysates (35ug/lane). DIPA (arrow) was detected using the purified Pab.