



[Go to Product page](#)

Datasheet for ABIN951128

## anti-CCDC9 antibody (N-Term)

### 3 Images

#### Overview

Quantity:	0.4 mL
Target:	CCDC9
Binding Specificity:	AA 22-52, N-Term
Reactivity:	Human, Mouse
Host:	Rabbit
Clonality:	Polyclonal
Application:	Western Blotting (WB), Flow Cytometry (FACS), Enzyme Immunoassay (EIA)

#### Product Details

Immunogen:	KLH conjugated synthetic peptide between 22-52 amino acids from the N-terminal region of human CCDC9
Isotype:	Ig Fraction
Specificity:	This antibody reacts to CCDC9.
Cross-Reactivity (Details):	Species reactivity (tested): Human and Mouse.
Purification:	Affinity chromatography on Protein A

#### Target Details

Target:	CCDC9
Alternative Name:	CCDC9 ( <a href="#">CCDC9 Products</a> )
Background:	Synonyms: Coiled-coil domain-containing protein 9

## Target Details

Molecular Weight:	59703 Da
Gene ID:	26093
NCBI Accession:	<a href="#">NP_056418</a>

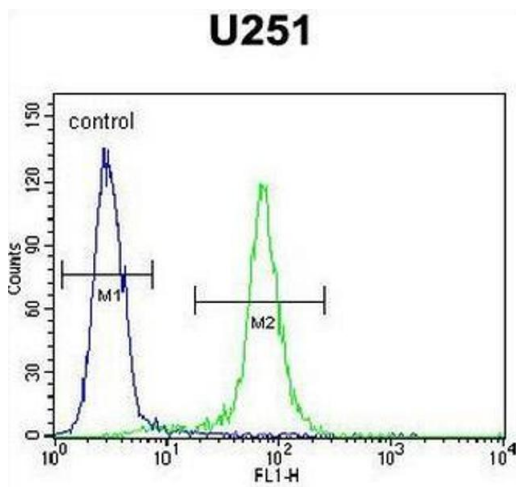
## Application Details

Application Notes:	Optimal working dilution should be determined by the investigator.
Restrictions:	For Research Use only

## Handling

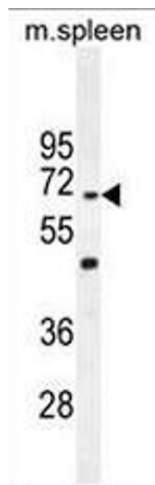
Format:	Liquid
Concentration:	0.25 mg/mL
Buffer:	PBS, 0.09 % (W/V) sodium azide
Preservative:	Sodium azide
Precaution of Use:	This product contains sodium azide: a POISONOUS AND HAZARDOUS SUBSTANCE which should be handled by trained staff only.
Handling Advice:	Avoid repeated freezing and thawing.
Storage:	4 °C/-20 °C
Storage Comment:	Store undiluted at 2-8 °C for one month or (in aliquots) at -20 °C for longer.

## Images



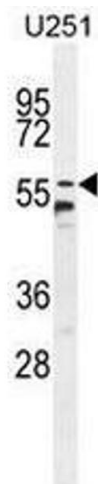
### Flow Cytometry

**Image 1.** CCDC9 Antibody (N-term) flow cytometric analysis of U251 cells (right histogram) compared to a negative control cell (left histogram). FITC-conjugated goat-anti-rabbit secondary antibodies were used for the analysis.



#### Western Blotting

**Image 2.** CCDC9 Antibody (N-term) western blot analysis in mouse spleen tissue lysates (35µg/lane). This demonstrates the CCDC9 antibody detected the CCDC9 protein (arrow).



#### Western Blotting

**Image 3.** CCDC9 Antibody (N-term) western blot analysis in U251 cell line lysates (35µg/lane). This demonstrates the CCDC9 antibody detected the CCDC9 protein (arrow).