



[Go to Product page](#)

Datasheet for ABIN951129

## anti-CCDC90B antibody (Middle Region)

### 2 Images

#### Overview

Quantity:	0.4 mL
Target:	CCDC90B
Binding Specificity:	AA 122-152, Middle Region
Reactivity:	Human
Host:	Rabbit
Clonality:	Polyclonal
Conjugate:	This CCDC90B antibody is un-conjugated
Application:	Western Blotting (WB), Immunohistochemistry (Paraffin-embedded Sections) (IHC (p)), Enzyme Immunoassay (EIA)

#### Product Details

Immunogen:	KLH conjugated synthetic peptide between 122-152 amino acids from the Central region of human CCDC90B
Isotype:	Ig Fraction
Specificity:	This antibody reacts to CCDC90B.
Cross-Reactivity (Details):	Species reactivity (tested):Human.
Purification:	Affinity chromatography on Protein A

#### Target Details

Target:	CCDC90B
---------	---------

## Target Details

---

Alternative Name:	CCDC90B ( <a href="#">CCDC90B Products</a> )
Background:	Coiled-coil domain containing 90B (CCDC90B) protein has seven predicted alpha helices, a characteristic of coiled-coil proteins. CCDC90B is characterized by the presence of a domain of unknown function, DUF1640. This domain is a characteristic of the entire protein with the exception of the first twenty-three amino acid residues, which are a mitochondrial targeting site and cleaved. This entry describes 2 isoforms produced by alternative splicing. Synonyms: CUA003, Coiled-coil domain-containing protein 90B, MDS011, MDS025
Molecular Weight:	29506 Da
Gene ID:	60492
NCBI Accession:	<a href="#">NP_068597</a>

## Application Details

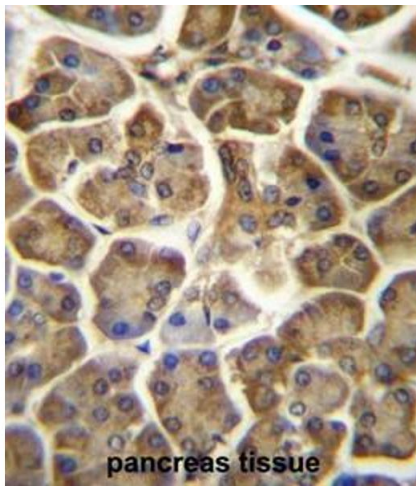
---

Application Notes:	Optimal working dilution should be determined by the investigator.
Restrictions:	For Research Use only

## Handling

---

Format:	Liquid
Concentration:	0.25 mg/mL
Buffer:	PBS, 0.09 % (W/V) sodium azide
Preservative:	Sodium azide
Precaution of Use:	This product contains sodium azide: a POISONOUS AND HAZARDOUS SUBSTANCE which should be handled by trained staff only.
Handling Advice:	Avoid repeated freezing and thawing.
Storage:	4 °C/-20 °C
Storage Comment:	Store undiluted at 2-8 °C for one month or (in aliquots) at -20 °C for longer.



### Immunohistochemistry (Paraffin-embedded Sections)

**Image 1.** CCDC90B Antibody (Center) immunohistochemistry analysis in formalin fixed and paraffin embedded human pancreas tissue followed by peroxidase conjugation of the secondary antibody and DAB staining. This data demonstrates the use of CCDC90B Antibody (Center) for immunohistochemistry. Clinical relevance has not been evaluated.



### Western Blotting

**Image 2.** CCDC90B Antibody (Center) western blot analysis in WiDr cell line lysates (35µg/lane). This demonstrates the CCDC90B antibody detected the CCDC90B protein (arrow).