



[Go to Product page](#)

Datasheet for ABIN951135

## anti-CCNB1IP1 antibody (C-Term)

### 3 Images

#### Overview

Quantity:	0.4 mL
Target:	CCNB1IP1
Binding Specificity:	C-Term
Reactivity:	Human
Host:	Rabbit
Clonality:	Polyclonal
Conjugate:	This CCNB1IP1 antibody is un-conjugated
Application:	Western Blotting (WB), Flow Cytometry (FACS), Immunohistochemistry (Paraffin-embedded Sections) (IHC (p)), Enzyme Immunoassay (EIA)

#### Product Details

Immunogen:	KLH conjugated synthetic peptide selected from the C-terminal region of human CCNB1IP1
Isotype:	Ig Fraction
Specificity:	This antibody reacts to CCNB1IP1.
Cross-Reactivity (Details):	Species reactivity (tested):Human.
Purification:	Affinity chromatography on Protein A

#### Target Details

Target:	CCNB1IP1
Alternative Name:	CCNB1IP1 ( <a href="#">CCNB1IP1 Products</a> )

## Target Details

---

Background:	HEI10 is a member of the E3 ubiquitin ligase family and functions in progression of the cell cycle through G(2)/M.Synonyms: C14orf18, Cyclin-B1-interacting protein 1, E3 ubiquitin-protein ligase CCNB1IP1, HEI10, Human enhancer of invasion 10
Molecular Weight:	31544 Da
Gene ID:	57820
NCBI Accession:	<a href="#">NP_067001</a>

## Application Details

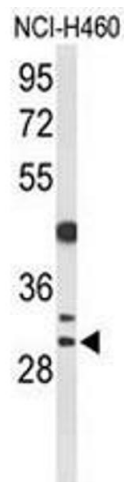
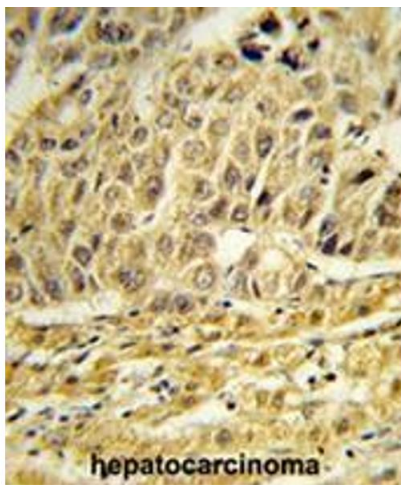
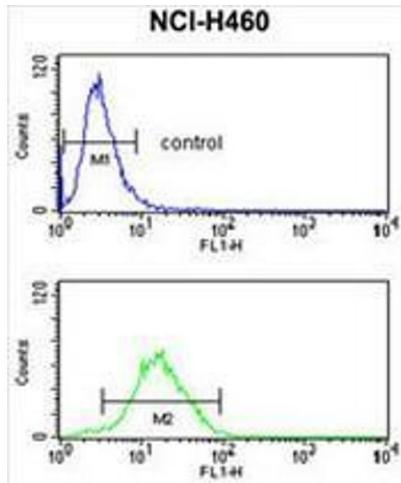
---

Application Notes:	Optimal working dilution should be determined by the investigator.
Restrictions:	For Research Use only

## Handling

---

Format:	Liquid
Concentration:	0.25 mg/mL
Buffer:	PBS, 0.09 % (W/V) sodium azide
Preservative:	Sodium azide
Precaution of Use:	This product contains sodium azide: a POISONOUS AND HAZARDOUS SUBSTANCE which should be handled by trained staff only.
Handling Advice:	Avoid repeated freezing and thawing.
Storage:	4 °C/-20 °C
Storage Comment:	Store undiluted at 2-8 °C for one month or (in aliquots) at -20 °C for longer.



### Flow Cytometry

**Image 1.** CCNB1IP1 Antibody (C-term) flow cytometry analysis of NCI-H460 cells (bottom histogram) compared to a negative control cell (top histogram). FITC-conjugated goat-anti-rabbit secondary antibodies were used for the analysis.

### Immunohistochemistry (Paraffin-embedded Sections)

**Image 2.** Formalin-fixed and paraffin-embedded human hepatocarcinoma reacted with EED Antibody (Center), which was peroxidase-conjugated to the secondary antibody, followed by DAB staining. This data demonstrates the use of this antibody for immunohistochemistry; clinical relevance has not been evaluated.

### Western Blotting

**Image 3.** Western blot analysis of CCNB1IP1 Antibody (C-term) in NCI-H460 cell line lysates (35µg/lane). CCNB1IP1 (arrow) was detected using the purified Pab.