

Datasheet for ABIN951138
anti-CCNYL3 antibody (N-Term)[Go to Product page](#)

2 Images

Overview

Quantity:	0.4 mL
Target:	CCNYL3
Binding Specificity:	AA 45-75, N-Term
Reactivity:	Human
Host:	Rabbit
Clonality:	Polyclonal
Application:	Western Blotting (WB), Flow Cytometry (FACS), Enzyme Immunoassay (EIA)

Product Details

Immunogen:	KLH conjugated synthetic peptide between 45-75 amino acids from the N-terminal region of human CCNYL3
Isotype:	Ig Fraction
Cross-Reactivity (Details):	Species reactivity (tested):Human.
Purification:	Affinity chromatography on Protein A

Target Details

Target:	CCNYL3
Alternative Name:	CCNYL3 (CCNYL3 Products)
Background:	Synonyms: Putative cyclin-Y-like protein 3
Molecular Weight:	39078 Da

Target Details

Gene ID: 9606

Application Details

Application Notes: Optimal working dilution should be determined by the investigator.

Restrictions: For Research Use only

Handling

Format: Liquid

Concentration: 0.25 mg/mL

Buffer: PBS, 0.09 % (W/V) sodium azide

Preservative: Sodium azide

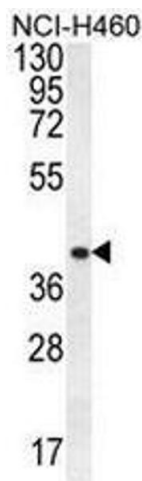
Precaution of Use: This product contains sodium azide: a POISONOUS AND HAZARDOUS SUBSTANCE which should be handled by trained staff only.

Handling Advice: Avoid repeated freezing and thawing.

Storage: 4 °C/-20 °C

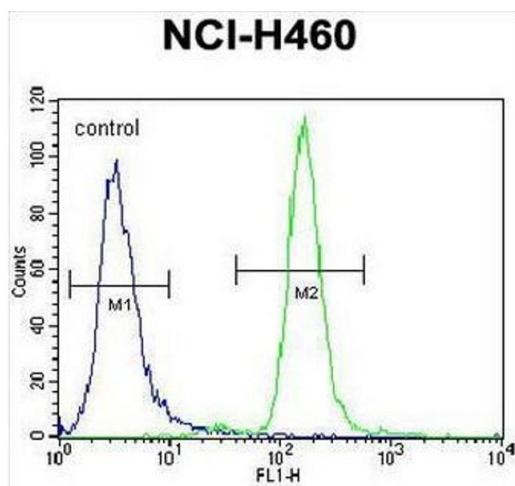
Storage Comment: Store undiluted at 2-8 °C for one month or (in aliquots) at -20 °C for longer.

Images



Western Blotting

Image 1. CCNYL3 Antibody (N-term) western blot analysis in NCI-H460 cell line lysates (35µg/lane). This demonstrates the CCNYL3 antibody detected the CCNYL3 protein (arrow).



Flow Cytometry

Image 2. CCNYL3 Antibody (N-term) flow cytometric analysis of NCI-H460 cells (right histogram) compared to a negative control cell (left histogram). FITC-conjugated goat-anti-rabbit secondary antibodies were used for the analysis.