

Datasheet for ABIN951196

**anti-CTLA4 antibody (N-Term)****2** Images**2** Publications[Go to Product page](#)

## Overview

Quantity:	200 µL
Target:	CTLA4
Binding Specificity:	AA 57-86, N-Term
Reactivity:	Human
Host:	Rabbit
Clonality:	Polyclonal
Conjugate:	This CTLA4 antibody is un-conjugated
Application:	Western Blotting (WB), Immunohistochemistry (Paraffin-embedded Sections) (IHC (p)), Enzyme Immunoassay (EIA)

## Product Details

Immunogen:	KLH conjugated synthetic peptide between 57-86 amino acids from the N-terminal region of Human CD152 / CTLA4. Genename: CTLA4
Isotype:	Ig Fraction
Specificity:	This antibody recognizes Human CD152 / CTLA4 (N-term).
Purification:	Affinity Chromatography on Protein A

## Target Details

Target:	CTLA4
Alternative Name:	CD152 / CTLA4 ( <a href="#">CTLA4 Products</a> )

## Target Details

Background:	CTLA4 is a member of the immunoglobulin superfamily and encodes a protein which transmits an inhibitory signal to T cells. The protein contains a V domain, a transmembrane domain, and a cytoplasmic tail. Alternate transcriptional splice variants, encoding different isoforms, have been characterized. The membrane-bound isoform functions as a homodimer interconnected by a disulfide bond, while the soluble isoform functions as a monomer. Mutations in this gene have been associated with insulin-dependent diabetes mellitus, Graves disease, Hashimoto thyroiditis, celiac disease, systemic lupus erythematosus, thyroid-associated orbitopathy, and other autoimmune diseases.Synonyms: CTLA-4, Cytotoxic T-lymphocyte protein 4, Cytotoxic T-lymphocyte-associated antigen 4
Molecular Weight:	24656 Da
Gene ID:	1493
NCBI Accession:	<a href="#">NP_001032720</a>
Pathways:	<a href="#">Cancer Immune Checkpoints</a>

## Application Details

Application Notes:	Optimal working dilution should be determined by the investigator.
Restrictions:	For Research Use only

## Handling

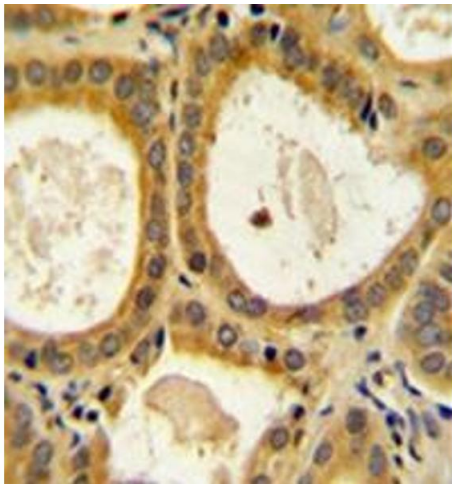
Format:	Liquid
Concentration:	0.25 mg/mL
Buffer:	PBS, 0.09 % Sodium Azide
Preservative:	Sodium azide
Precaution of Use:	This product contains sodium azide: a POISONOUS AND HAZARDOUS SUBSTANCE which should be handled by trained staff only.
Handling Advice:	Avoid repeated freezing and thawing.
Storage:	4 °C/-20 °C
Storage Comment:	Store undiluted at 2-8 °C for one month or (in aliquots) at -20 °C for longer.

Publications

Product cited in: Karpathiou, Chauleur, Hathroubi, Habougit, Peoch: "Expression of CD3, PD-L1 and CTLA-4 in mammary and extra-mammary Paget disease." in: **Cancer immunology, immunotherapy : CII**, Vol. 67, Issue 8, pp. 1297-1303, (2018) ([PubMed](#)).

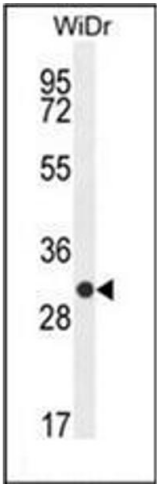
Karpathiou, Casteillo, Giroult, Forest, Fournel, Monaya, Froudarakis, Dumollard, Prades, Peoch: "Prognostic impact of immune microenvironment in laryngeal and pharyngeal squamous cell carcinoma: Immune cell subtypes, immuno-suppressive pathways and clinicopathologic characteristics." in: **Oncotarget**, Vol. 8, Issue 12, pp. 19310-19322, (2017) ([PubMed](#)).

Images



**Immunohistochemistry (Paraffin-embedded Sections)**

**Image 1.** Formalin fixed and paraffin embedded human prostate carcinoma reacted with CD152 / CTLA4 Antibody (N-term) followed by peroxidase conjugation of the secondary antibody and DAB staining.



**Western Blotting**

**Image 2.** Western blot analysis of CD152 / CTLA4 Antibody (N-term) in WiDr cell line lysates (35ug/lane).