

Datasheet for ABIN951205  
**anti-SELPLG antibody (C-Term)**



[Go to Product page](#)

2 Images

## Overview

Quantity:	0.4 mL
Target:	SELPLG
Binding Specificity:	AA 386-413, C-Term
Reactivity:	Human
Host:	Rabbit
Clonality:	Polyclonal
Conjugate:	This SELPLG antibody is un-conjugated
Application:	Flow Cytometry (FACS), Western Blotting (WB), Enzyme Immunoassay (EIA)

## Product Details

Immunogen:	KLH conjugated synthetic peptide between 386-413 amino acids from the C-terminal region of Human SELPLG Gene name: SELPLG
Isotype:	Ig Fraction
Specificity:	Recognizes SELPLG (C-term).
Purification:	Protein A column followed by peptide Affinity purification

## Target Details

Target:	SELPLG
Alternative Name:	CD162 / PSGL1 ( <a href="#">SELPLG Products</a> )
Background:	SELPLG is the high affinity counter-receptor for P-selectin on myeloid cells and stimulated T

## Target Details

---

lymphocytes. As such, it plays a critical role in the tethering of these cells to activated platelets or endothelia expressing P-selectin. The organization of the SELPG gene closely resembles that of CD43 and the human platelet glycoprotein GpIb-alpha both of which have an intron in the 5-prime-noncoding region, a long second exon containing the complete coding region, and TATA-less promoters. Synonyms: P-selectin glycoprotein ligand 1, PSGL-1, SELPLG, Selectin P ligand

Gene ID: 6404

NCBI Accession: [NP\\_001193538](#)

## Application Details

---

Application Notes: Optimal working dilution should be determined by the investigator.

Restrictions: For Research Use only

## Handling

---

Format: Liquid

Concentration: 0.25 mg/mL

Buffer: PBS with 0.09 % (W/V) Sodium Azide as preservative

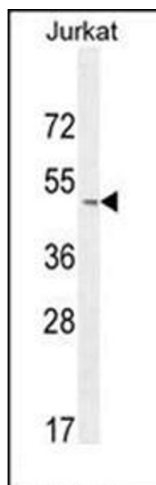
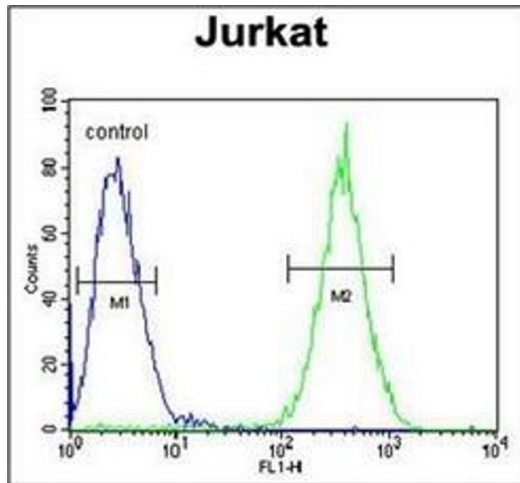
Preservative: Sodium azide

Precaution of Use: This product contains sodium azide: a POISONOUS AND HAZARDOUS SUBSTANCE which should be handled by trained staff only.

Handling Advice: Avoid repeated freezing and thawing.

Storage: 4 °C/-20 °C

Storage Comment: Store the antibody undiluted at 2-8 °C for one month or (in aliquots) at -20 °C for longer.



### Flow Cytometry

**Image 1.** flow cytometric analysis of Jurkat cells using SELPLG Antibody (C-term) Cat.-No AP53840PU-N (Right histogram) compared to a negative control cell (Left histogram). FITC-conjugated Goat-anti-Rabbit secondary antibodies were used for the analysis.

### Western Blotting

**Image 2.** Western blot analysis of SELPLG Antibody (C-term) Cat.-No AP53840PU-N in Jurkat cell line lysates (35ug/lane). This demonstrates the SELPLG antibody detected the SELPLG protein (arrow).