

Datasheet for ABIN951207
anti-HMMR antibody (C-Term)

3 Images

[Go to Product page](#)

Overview

Quantity:	0.4 mL
Target:	HMMR
Binding Specificity:	AA 675-705, C-Term
Reactivity:	Human
Host:	Rabbit
Clonality:	Polyclonal
Application:	Western Blotting (WB), Flow Cytometry (FACS), Immunohistochemistry (Paraffin-embedded Sections) (IHC (p)), Enzyme Immunoassay (EIA)

Product Details

Immunogen:	KLH conjugated synthetic peptide between 675-705 amino acids from the C-terminal region of human CD168 / HMMR
Isotype:	Ig Fraction
Specificity:	This antibody recognizes Human CD168 / HMMR (C-term).
Purification:	Protein A column, followed by peptide affinity purification

Target Details

Target:	HMMR
Alternative Name:	CD168 / HMMR (HMMR Products)
Background:	The protein encoded by this gene is involved in cell motility. It is expressed in breast tissue and together with other proteins, it forms a complex with BRCA1 and BRCA2, thus is potentially

Target Details

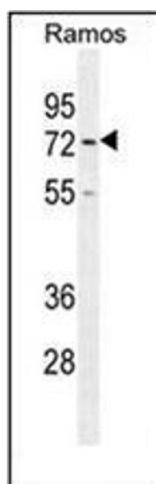
	associated with higher risk of breast cancer. Alternatively spliced transcript variants encoding different isoforms have been noted for this gene.Synonyms: Hyaluronan mediated motility receptor, IHABP, Intracellular hyaluronic acid-binding protein, RHAMM, Receptor for hyaluronan-mediated motility
Molecular Weight:	84100 Da
Gene ID:	3161
NCBI Accession:	NP_001136028
Pathways:	Glycosaminoglycan Metabolic Process

Application Details

Application Notes:	Optimal working dilution should be determined by the investigator.
Restrictions:	For Research Use only

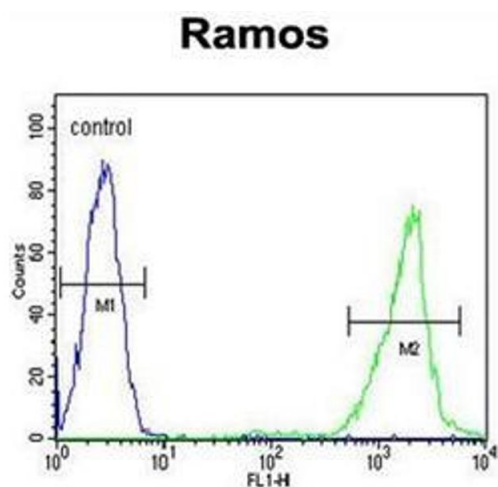
Handling

Format:	Liquid
Concentration:	0.25 mg/mL
Buffer:	PBS containing 0.09 % (W/V) Sodium Azide as preservative
Preservative:	Sodium azide
Precaution of Use:	This product contains sodium azide: a POISONOUS AND HAZARDOUS SUBSTANCE which should be handled by trained staff only.
Handling Advice:	Avoid repeated freezing and thawing.
Storage:	4 °C/-20 °C
Storage Comment:	Store undiluted at 2-8 °C for one month or (in aliquots) at -20 °C for longer.



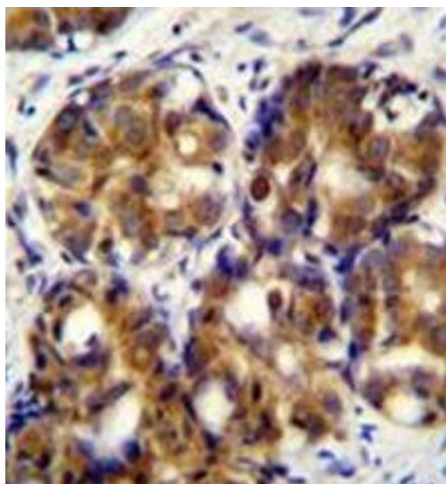
Western Blotting

Image 1. Western blot analysis of CD168 / HMMR Antibody (C-term) in Ramos cell line lysates (35ug/lane). This demonstrates the HMMR antibody detected the HMMR protein (arrow).



Flow Cytometry

Image 2. Flow cytometric analysis of Ramos cells using CD168 / HMMR Antibody (C-term) Cat.-No AP52063PU-N (right histogram) compared to a negative control cell (left histogram). FITC-conjugated goat-anti-rabbit secondary antibodies were used for the analysis.



Immunohistochemistry (Paraffin-embedded Sections)

Image 3. Immunohistochemistry analysis in formalin fixed and paraffin embedded human breast carcinoma reacted with CD168 / HMMR Antibody (C-term) followed by peroxidase conjugation of the secondary antibody and DAB staining.