

Datasheet for ABIN951208

anti-SIGLEC5 antibody (N-Term)[Go to Product page](#)**1** Image

Overview

Quantity:	0.4 mL
Target:	SIGLEC5
Binding Specificity:	AA 103-132, N-Term
Reactivity:	Human
Host:	Rabbit
Clonality:	Polyclonal
Conjugate:	This SIGLEC5 antibody is un-conjugated
Application:	Western Blotting (WB), Enzyme Immunoassay (EIA)

Product Details

Immunogen:	KLH conjugated synthetic peptide between 103-132 amino acids from the N-terminal region of Human SIGLEC5. Genename: SIGLEC5
Isotype:	Ig Fraction
Specificity:	This antibody recognizes Human CD170 / SIGLEC5 (N-term).
Purification:	Affinity Chromatography on Protein A

Target Details

Target:	SIGLEC5
Alternative Name:	CD170 / SIGLEC5 (SIGLEC5 Products)
Background:	The sialic acid-binding immunoglobulin-like lectins (SIGLECs), such as SIGLEC5, are a subgroup

Target Details

of the immunoglobulin (Ig) superfamily that mediate protein-carbohydrate interactions. They specifically interact with sialic acids in glycoproteins and glycolipids, with each SIGLEC having a particular preference for both the nature of the sialic acid and its glycosidic linkage to adjacent sugars. SIGLECs have similar structures, including extracellular Ig-like domains composed of an N-terminal V-set domain followed by varying numbers of C2-set domains. It appears that all SIGLECs have an unusual arrangement of conserved cysteine residues in the V-set and adjacent C2-set domains. Most SIGLECs are expressed uniquely within the hematopoietic system (Cornish et al., 1998 [PubMed 9731071]).Synonyms: CD33 antigen-like 2, CD33L2, OB-binding protein 2, OBBP2, Obesity-binding protein 2, Sialic acid-binding Ig-like lectin 5, Siglec-5

Molecular Weight: 60715 Da

Gene ID: 8778

NCBI Accession: [NP_003821](#)

Application Details

Application Notes: Optimal working dilution should be determined by the investigator.

Restrictions: For Research Use only

Handling

Format: Liquid

Concentration: 0.25 mg/mL

Buffer: PBS, 0.09 % Sodium Azide

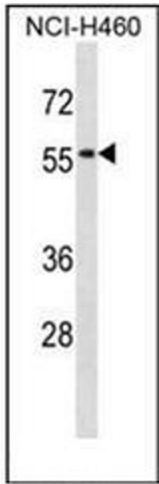
Preservative: Sodium azide

Precaution of Use: This product contains sodium azide: a POISONOUS AND HAZARDOUS SUBSTANCE which should be handled by trained staff only.

Handling Advice: Avoid repeated freezing and thawing.

Storage: 4 °C/-20 °C

Storage Comment: Store undiluted at 2-8 °C for one month or (in aliquots) at -20 °C for longer.



Western Blotting

Image 1. Western blot analysis of CD170 / SIGLEC5 Antibody in NCI-H460 cell line lysates (35ug/lane). This demonstrates the SIGLEC5 antibody detected the SIGLEC5 protein (arrow).