

Datasheet for ABIN951244
anti-ENPEP antibody (C-Term)[Go to Product page](#)

3 Images

Overview

Quantity:	0.4 mL
Target:	ENPEP
Binding Specificity:	AA 906-938, C-Term
Reactivity:	Human
Host:	Rabbit
Clonality:	Polyclonal
Conjugate:	This ENPEP antibody is un-conjugated
Application:	Western Blotting (WB), Flow Cytometry (FACS), Immunohistochemistry (Paraffin-embedded Sections) (IHC (p)), Enzyme Immunoassay (EIA)

Product Details

Immunogen:	KLH conjugated synthetic peptide between 906-938 amino acids from the C-terminal region of Human ENPEP.
Isotype:	Ig Fraction
Specificity:	This antibody recognizes Human CD249 / Glutamyl aminopeptidase (C-term).
Purification:	Affinity Chromatography on Protein A

Target Details

Target:	ENPEP
Alternative Name:	CD249 / Glutamyl Aminopeptidase (ENPEP Products)

Target Details

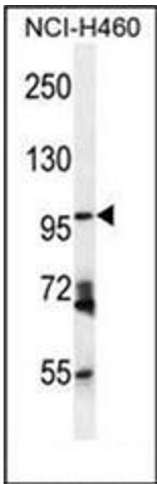
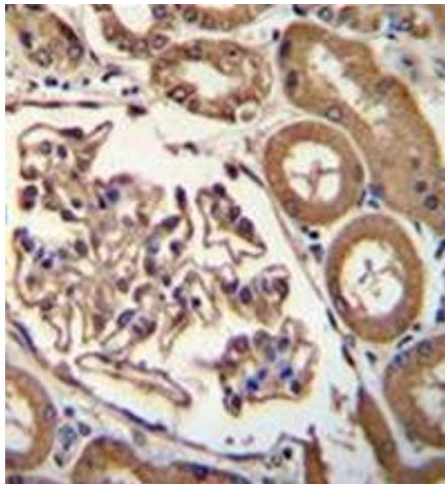
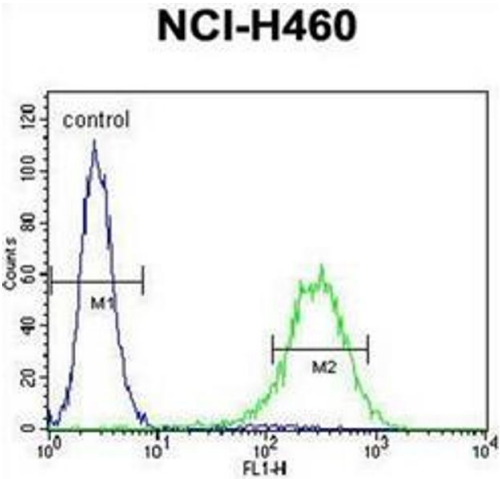
Background:	ENPEP appears to have a role in the catabolic pathway of the renin-angiotensin system. Probably plays a role in regulating growth and differentiation of early B-lineage cells.Synonyms: Aminopeptidase A, Differentiation antigen gp160, EAP, ENPEP
Molecular Weight:	109244 Da
Gene ID:	2028
NCBI Accession:	NP_001968
Pathways:	Peptide Hormone Metabolism , Regulation of Systemic Arterial Blood Pressure by Hormones

Application Details

Application Notes:	Optimal working dilution should be determined by the investigator.
Restrictions:	For Research Use only

Handling

Format:	Liquid
Concentration:	0.25 mg/mL
Buffer:	PBS containing 0.09 % (W/V) Sodium Azide as preservative
Preservative:	Sodium azide
Precaution of Use:	This product contains sodium azide: a POISONOUS AND HAZARDOUS SUBSTANCE which should be handled by trained staff only.
Handling Advice:	Avoid repeated freezing and thawing.
Storage:	4 °C/-20 °C
Storage Comment:	Store undiluted at 2-8 °C for one month or (in aliquots) at -20 °C for longer.



Flow Cytometry

Image 1. Flow cytometric analysis of NCI-H460 cells using CD249 / Glutamyl aminopeptidase Antibody (C-term) Cat.- No AP51433PU-N (right histogram) compared to a negative control cell (left histogram). FITC-conjugated goat-anti-rabbit secondary antibodies were used for the analysis.

Immunohistochemistry (Paraffin-embedded Sections)

Image 2. Formalin fixed and paraffin embedded human kidney tissue reacted with CD249 / Glutamyl aminopeptidase Antibody (C-term) followed by peroxidase conjugation of the secondary antibody and DAB staining.

Western Blotting

Image 3. Western blot analysis of CD249 / Glutamyl aminopeptidase Antibody (C-term) in NCI-H460 cell line lysates (35ug/lane). This demonstrates the ENPEP antibody detected the ENPEP protein (arrow).