

Datasheet for ABIN951275

anti-MRC2 antibody (Middle Region)[Go to Product page](#)**1** Image

Overview

Quantity:	0.4 mL
Target:	MRC2
Binding Specificity:	AA 797-827, Middle Region
Reactivity:	Human
Host:	Rabbit
Clonality:	Polyclonal
Conjugate:	This MRC2 antibody is un-conjugated
Application:	Western Blotting (WB)

Product Details

Immunogen:	Synthetic peptide - KLH conjugated - corresponding to the central region (between 797-827aa) of human C280 / MRC2.
Isotype:	Ig Fraction
Specificity:	This antibody recognizes CD280 /MRC2.
Cross-Reactivity (Details):	Species reactivity (tested):Human
Purification:	Purified through a Protein A column followed by peptide affinity purification

Target Details

Target:	MRC2
Alternative Name:	CD280 / MRC2 (MRC2 Products)

Target Details

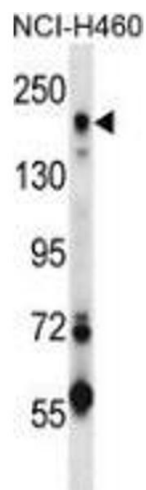
Background:	MRC2 is a recycling endocytic receptor that functions in cell motility and remodeling of the extracellular matrix by promoting cell migration and uptake of collagens for intracellular degradation [Wienke et al., 2007, PubMed 17974964]Synonyms: C-type mannose receptor 2, ENDO180, Endocytic receptor 180, KIAA0709, Macrophage mannose receptor 2, UPAR-associated protein, UPARAP, Urokinase receptor-associated protein, Urokinase-type plasminogen activator receptor-associated protein
Gene ID:	9902
NCBI Accession:	NP_006030

Application Details

Application Notes:	Suggested dilutions: Western blot: 1/100-1/500, Enzyme immunoassay: 1/1000
Restrictions:	For Research Use only

Handling

Format:	Liquid
Concentration:	0.25 mg/mL
Buffer:	PBS with 0.09 % (W/V) Sodium azide
Preservative:	Sodium azide
Precaution of Use:	This product contains sodium azide: a POISONOUS AND HAZARDOUS SUBSTANCE which should be handled by trained staff only.
Handling Advice:	Avoid repeated freezing and thawing.
Storage:	4 °C/-20 °C
Storage Comment:	Store undiluted at 2-8 °C for one month or (in aliquots) at -20 °C for longer.



Western Blotting

Image 1. Western blot analysis in NCI-H460 cell line lysates (35ug/lane) using CD280 / MRC2 Antibody . This demonstrates this antibody detected the MRC2 protein (arrow).