

Datasheet for ABIN951296  
**anti-IGSF8 antibody (Middle Region)**[Go to Product page](#)

## 2 Images

## Overview

Quantity:	0.4 mL
Target:	IGSF8
Binding Specificity:	AA 233-262, Middle Region
Reactivity:	Human, Mouse
Host:	Rabbit
Clonality:	Polyclonal
Conjugate:	This IGSF8 antibody is un-conjugated
Application:	Western Blotting (WB), Immunohistochemistry (Paraffin-embedded Sections) (IHC (p)), Enzyme Immunoassay (EIA)

## Product Details

Immunogen:	Synthetic peptide (233-262 aa) - KLH conjugated - corresponding to internal domain of human IGSF8.
Isotype:	Ig Fraction
Specificity:	This antibody detects IGSF8 (Center).
Cross-Reactivity (Details):	Species reactivity (tested): Human, Mouse
Purification:	Purified through a protein A column; followed by peptide affinity purification.

## Target Details

Target:	IGSF8
---------	-------

## Target Details

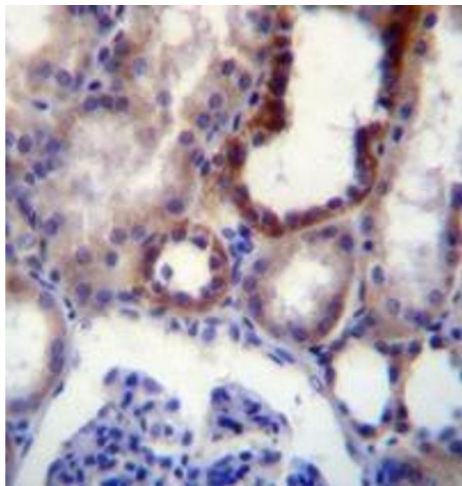
Alternative Name:	CD316 / IGSF8 ( <a href="#">IGSF8 Products</a> )
Background:	<p>GSF8/PGRL/EWI-2 is a membrane protein that contains 4 Ig domains and forms highly proximal, specific and stoichiometric complexes with both CD9 and CD81 a tetraspanin. Tetraspanins and their molecular partners form primary complexes that then undergo tetraspanin-tetraspanin interactions to form a network of molecular interactions called a tetraspanin web. IGSF8 then may play a key role in diverse functions ascribed to CD81 and CD9 including oocyte fertilization or hepatitis C virus function, regulation of proliferation and differentiation of keratinocytes. It may also be a negative regulator of cell motility and suppress T-cell mobility coordinately with CD81. Synonyms: CD81 partner 3, CD81P3, EWI2, Glu-Trp-Ile EWI motif-containing protein 2, Immunoglobulin superfamily member 8, KCT4, Keratinocytes-associated transmembrane protein 4, LIR-D1</p>
Gene ID:	93185
NCBI Accession:	<a href="#">NP_001193594</a>

## Application Details

Application Notes:	Optimal working dilution should be determined by the investigator.
Restrictions:	For Research Use only

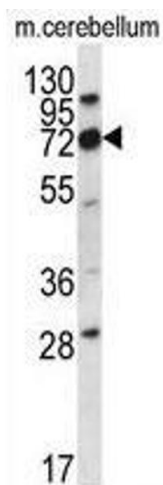
## Handling

Format:	Liquid
Concentration:	0.25 mg/mL
Buffer:	PBS with 0.09 % (W/V) Sodium Azide.
Preservative:	Sodium azide
Precaution of Use:	This product contains sodium azide: a POISONOUS AND HAZARDOUS SUBSTANCE which should be handled by trained staff only.
Handling Advice:	Avoid repeated freezing and thawing.
Storage:	4 °C/-20 °C
Storage Comment:	Store the antibody undiluted at 2-8 °C for one month or (in aliquots) at -20 °C for longer.



#### Immunohistochemistry (Paraffin-embedded Sections)

**Image 1.** Immunohistochemistry analysis in formalin fixed and paraffin embedded (FFPE) human kidney tissue using CD316 / IGSF8 Antibody , followed by peroxidase conjugation of the secondary antibody and DAB staining. This data demonstrates the use of IGSF8 antibody for immunohistochemistry. Clinical relevance has not been evaluated.



#### Western Blotting

**Image 2.** Western blot analysis in mouse cerebellum tissue lysates (35ug/lane) using Cd316 / IGSF8 Antibody . This demonstrates the IGSF8 antibody detected the IGSF8 protein (arrow).