

Datasheet for ABIN951308
anti-ENTPD3 antibody (C-Term)[Go to Product page](#)

3 Images

Overview

Quantity:	0.4 mL
Target:	ENTPD3
Binding Specificity:	AA 499-531, C-Term
Reactivity:	Human
Host:	Rabbit
Clonality:	Polyclonal
Application:	Western Blotting (WB), Flow Cytometry (FACS), Immunohistochemistry (Paraffin-embedded Sections) (IHC (p)), Enzyme Immunoassay (EIA)

Product Details

Immunogen:	KLH conjugated synthetic peptide between 499-531 amino acids from the C-terminal region of Human ENTPD3.
Isotype:	Ig Fraction
Specificity:	This antibody recognizes Human CD39L3 / ENTPD3 (C-term).
Purification:	Affinity Chromatography on Protein A

Target Details

Target:	ENTPD3
Alternative Name:	CD39L3 / ENTPD3 (ENTPD3 Products)
Background:	ENTPD3 is similar to E-type nucleotidases (NTPases). NTPases, such as CD39, mediate catabolism of extracellular nucleotides. ENTPD3 contains 4 apyrase-conserved regions which

Target Details

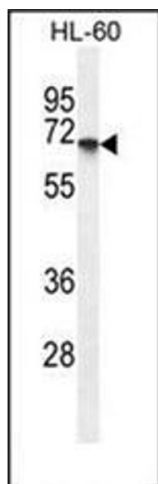
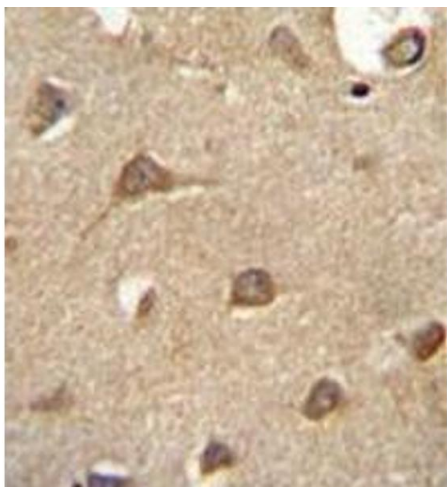
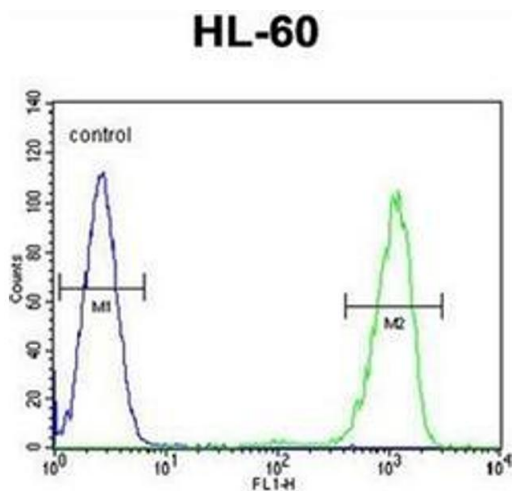
	is characteristic of NTPases.Synonyms: CD39 antigen-like 3, Ecto-ATP diphosphohydrolase, Ectonucleoside triphosphate diphosphohydrolase 3, HB6, NTPDase 3
Molecular Weight:	59105 Da
Gene ID:	956
NCBI Accession:	NP_001239

Application Details

Application Notes:	Optimal working dilution should be determined by the investigator.
Restrictions:	For Research Use only

Handling

Format:	Liquid
Concentration:	0.25 mg/mL
Buffer:	PBS containing 0.09 % (W/V) Sodium Azide as preservative
Preservative:	Sodium azide
Precaution of Use:	This product contains sodium azide: a POISONOUS AND HAZARDOUS SUBSTANCE which should be handled by trained staff only.
Handling Advice:	Avoid repeated freezing and thawing.
Storage:	4 °C/-20 °C
Storage Comment:	Store undiluted at 2-8 °C for one month or (in aliquots) at -20 °C for longer.



Flow Cytometry

Image 1. Flow cytometric analysis of HL-60 cells using CD39L3 / ENTPD3 Antibody (C-term) Cat.-No AP51439PU-N (right histogram) compared to a negative control cell (left histogram). FITC-conjugated goat-anti-rabbit secondary antibodies were used for the analysis.

Immunohistochemistry (Paraffin-embedded Sections)

Image 2. Formalin fixed and paraffin embedded human brain tissue reacted with CD39L3 / ENTPD3 Antibody (C-term) followed by peroxidase conjugation of the secondary antibody and DAB staining.

Western Blotting

Image 3. Western blot analysis of CD39L3 / ENTPD3 Antibody (C-term) in HL-60 cell line lysates (35ug/lane). This demonstrates the ENTPD3 antibody detected the ENTPD3 protein (arrow).