

Datasheet for ABIN951340  
**anti-ITGA5 antibody (Middle Region)**



[Go to Product page](#)

3 Images

## Overview

Quantity:	0.4 mL
Target:	ITGA5
Binding Specificity:	AA 574-602, Middle Region
Reactivity:	Human
Host:	Rabbit
Clonality:	Polyclonal
Conjugate:	This ITGA5 antibody is un-conjugated
Application:	Western Blotting (WB), Immunohistochemistry (Paraffin-embedded Sections) (IHC (p)), Enzyme Immunoassay (EIA)

## Product Details

Immunogen:	KLH conjugated synthetic peptide between 574-602 amino acids from the Central region of Human CD49e / ITGA5
Isotype:	Ig Fraction
Specificity:	This antibody recognizes Human CD49e / ITGA5 (Center).
Purification:	Protein A column, followed by peptide affinity purification

## Target Details

Target:	ITGA5
Alternative Name:	CD49e / ITGA5 ( <a href="#">ITGA5 Products</a> )

Target Details

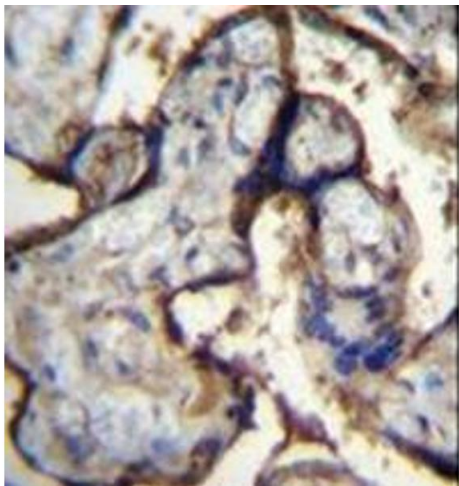
Background:	The product of this gene belongs to the integrin alpha chain family. Integrins are heterodimeric integral membrane proteins composed of an alpha chain and a beta chain. This gene encodes the integrin alpha 5 chain. Alpha chain 5 undergoes post-translational cleavage in the extracellular domain to yield disulfide-linked light and heavy chains that join with beta 1 to form a fibronectin receptor. In addition to adhesion, integrins are known to participate in cell-surface mediated signalling. [provided by RefSeq].Synonyms: CD49 antigen-like family member E, FNRA, Fibronectin receptor subunit alpha, Integrin alpha-5, Integrin alpha-F, VLA-5, VLA5
Molecular Weight:	114536 Da
Gene ID:	3678
NCBI Accession:	<a href="#">NP_002196</a>
Pathways:	<a href="#">Integrin Complex</a>

Application Details

Application Notes:	Optimal working dilution should be determined by the investigator.
Restrictions:	For Research Use only

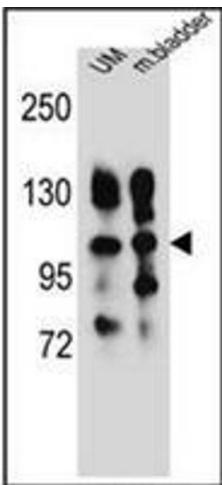
Handling

Format:	Liquid
Concentration:	0.25 mg/mL
Buffer:	PBS containing 0.09 % (W/V) Sodium Azide as preservative
Preservative:	Sodium azide
Precaution of Use:	This product contains sodium azide: a POISONOUS AND HAZARDOUS SUBSTANCE which should be handled by trained staff only.
Handling Advice:	Avoid repeated freezing and thawing.
Storage:	4 °C/-20 °C
Storage Comment:	Store undiluted at 2-8 °C for one month or (in aliquots) at -20 °C for longer.



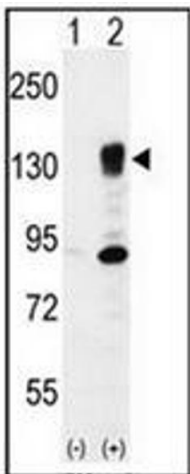
**Immunohistochemistry (Paraffin-embedded Sections)**

**Image 1.** Immunohistochemistry analysis in formalin fixed and paraffin embedded human placenta tissue reacted with CD49e / ITGA5 Antibody (Center) followed by peroxidase conjugation of the secondary antibody and DAB staining.



**Western Blotting**

**Image 2.** Western blot analysis of CD49e / ITGA5 Antibody (Center) in human uterine tumor and mouse bladder tissue lysates (35ug/lane). This demonstrates the ITGA5 antibody detected the ITGA5 protein (arrow).



**Western Blotting**

**Image 3.** Western blot analysis of ITGA5 (arrow) using CD49e / ITGA5 Antibody (Center) Cat.-No AP52251PU-N. 293 cell lysates (2 ug/lane) either nontransfected (Lane 1) or transiently transfected (Lane 2) with the ITGA5 gene.