

Datasheet for ABIN951452
anti-CCR8 antibody (C-Term)[Go to Product page](#)

2 Images

Overview

Quantity:	0.4 mL
Target:	CCR8
Binding Specificity:	AA 297-325, C-Term
Reactivity:	Human
Host:	Rabbit
Clonality:	Polyclonal
Conjugate:	This CCR8 antibody is un-conjugated
Application:	Western Blotting (WB), Flow Cytometry (FACS), Enzyme Immunoassay (EIA)

Product Details

Immunogen:	KLH conjugated synthetic peptide between 297-325 amino acids from the C-terminal region of human CCR8
Isotype:	Ig Fraction
Specificity:	This antibody reacts to CCR8.
Cross-Reactivity (Details):	Species reactivity (tested):Human.
Purification:	Affinity chromatography on Protein A

Target Details

Target:	CCR8
Alternative Name:	CDw198 / CCR8 (CCR8 Products)

Target Details

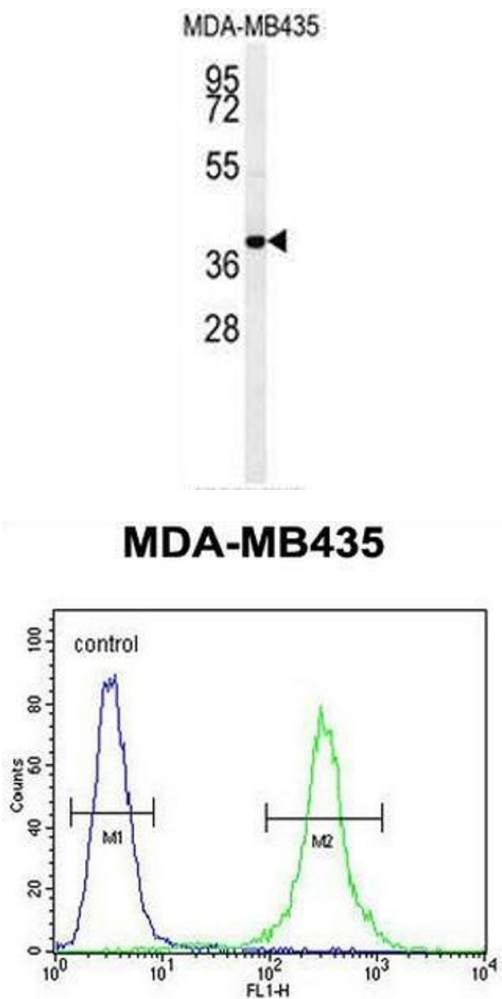
Background:	CCR8 encodes a member of the beta chemokine receptor family, which is predicted to be a seven transmembrane protein similar to G protein-coupled receptors. Chemokines and their receptors are important for the migration of various cell types into the inflammatory sites. This receptor protein preferentially expresses in the thymus. I-309, thymus activation-regulated cytokine (TARC) and macrophage inflammatory protein-1 beta (MIP-1 beta) have been identified as ligands of this receptor. Studies of this receptor and its ligands suggested its role in regulation of monocyte chemotaxis and thymic cell apoptosis. More specifically, this receptor may contribute to the proper positioning of activated T cells within the antigenic challenge sites and specialized areas of lymphoid tissues. CCR8 is located at the chemokine receptor gene cluster region.Synonyms: C-C CKR-8, C-C chemokine receptor type 8, CC-CKR-8, CC-chemokine receptor CHEMR1, CCR-8, CKRL1, CMKBR8, CMKBRL2, Chemokine receptor-like 1, GPR-CY6, TER1
Molecular Weight:	40844 Da
Gene ID:	1237
NCBI Accession:	NP_005192

Application Details

Application Notes:	Optimal working dilution should be determined by the investigator.
Restrictions:	For Research Use only

Handling

Format:	Liquid
Concentration:	0.25 mg/mL
Buffer:	PBS, 0.09 % (W/V) sodium azide
Preservative:	Sodium azide
Precaution of Use:	This product contains sodium azide: a POISONOUS AND HAZARDOUS SUBSTANCE which should be handled by trained staff only.
Handling Advice:	Avoid repeated freezing and thawing.
Storage:	4 °C/-20 °C
Storage Comment:	Store undiluted at 2-8 °C for one month or (in aliquots) at -20 °C for longer.



Western Blotting

Image 1. CCR8 Antibody (C-term) western blot analysis in MDA-MB435 cell line lysates (35µg/lane). This demonstrates the CCR8 antibody detected the CCR8 protein (arrow).

Flow Cytometry

Image 2. CCR8 Antibody (C-term) flow cytometric analysis of MDA-MB435 cells (right histogram) compared to a negative control cell (left histogram). FITC-conjugated goat-anti-rabbit secondary antibodies were used for the analysis.