

Datasheet for ABIN951461
anti-CEBPD antibody (C-Term)

2 Images

[Go to Product page](#)

Overview

Quantity:	0.4 mL
Target:	CEBPD
Binding Specificity:	AA 176-205, C-Term
Reactivity:	Human, Mouse
Host:	Rabbit
Clonality:	Polyclonal
Conjugate:	This CEBPD antibody is un-conjugated
Application:	Western Blotting (WB), Enzyme Immunoassay (EIA)

Product Details

Immunogen:	KLH conjugated synthetic peptide between 176-205 amino acids from the C-terminal region of human CEBPD
Isotype:	Ig Fraction
Specificity:	This antibody reacts to CEBPD.
Cross-Reactivity (Details):	Species reactivity (tested):Mouse.
Purification:	Affinity chromatography on Protein A

Target Details

Target:	CEBPD
Alternative Name:	CEBPD (CEBPD Products)

Target Details

Background: The protein encoded by this intronless gene is a bZIP transcription factor which can bind as a homodimer to certain DNA regulatory regions. It can also form heterodimers with the related protein CEBP-alpha. The encoded protein is important in the regulation of genes involved in immune and inflammatory responses, and may be involved in the regulation of genes associated with activation and/or differentiation of macrophages. The cytogenetic location of this locus has been reported as both 8p11 and 8q11. Synonyms: C/EBP delta, CCAAT/enhancer-binding protein delta, NF-IL6-beta, Nuclear factor NF-IL6-beta

Molecular Weight: 28467 Da

Gene ID: 1052

NCBI Accession: [NP_005186](#)

Application Details

Application Notes: Optimal working dilution should be determined by the investigator.

Restrictions: For Research Use only

Handling

Format: Liquid

Concentration: 0.25 mg/mL

Buffer: PBS, 0.09 % (W/V) sodium azide

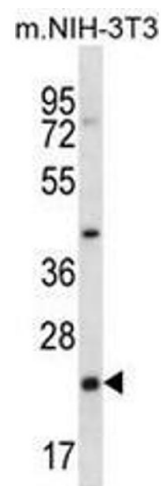
Preservative: Sodium azide

Precaution of Use: This product contains sodium azide: a POISONOUS AND HAZARDOUS SUBSTANCE which should be handled by trained staff only.

Handling Advice: Avoid repeated freezing and thawing.

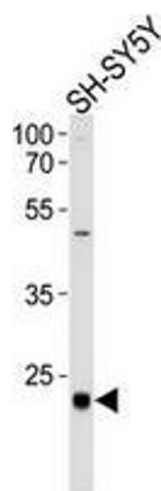
Storage: 4 °C/-20 °C

Storage Comment: Store undiluted at 2-8 °C for one month or (in aliquots) at -20 °C for longer.



Western Blotting

Image 1. CEBPD Antibody (C-term) western blot analysis in mouse NIH-3T3 cell line lysates (35µg/lane). This demonstrates the CEBPD antibody detected the CEBPD protein (arrow).



Western Blotting

Image 2. CEBPD Antibody (C-term) Cat.#AP50848PU-N western blot analysis in SH-SY5Y cell line lysates (35ug/lane).