

Datasheet for ABIN951476  
**anti-CEP70 antibody (Middle Region)**

## 3 Images

[Go to Product page](#)

## Overview

Quantity:	0.4 mL
Target:	CEP70
Binding Specificity:	AA 316-346, Middle Region
Reactivity:	Human, Hamster
Host:	Rabbit
Clonality:	Polyclonal
Conjugate:	This CEP70 antibody is un-conjugated
Application:	Western Blotting (WB), Flow Cytometry (FACS), Immunohistochemistry (Paraffin-embedded Sections) (IHC (p)), Enzyme Immunoassay (EIA)

## Product Details

Immunogen:	KLH conjugated synthetic peptide between 316-346 amino acids from the Central region of human CEP70
Isotype:	Ig Fraction
Specificity:	This antibody reacts to CEP70.
Cross-Reactivity (Details):	Species reactivity (tested): Human and Hamster.
Purification:	Affinity chromatography on Protein A

## Target Details

Target:	CEP70
---------	-------

## Target Details

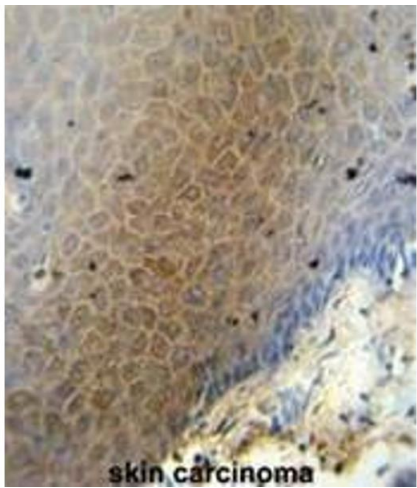
Alternative Name:	CEP70 ( <a href="#">CEP70 Products</a> )
Background:	Synonyms: BITE, Centrosomal protein of 70 kDa, p10-binding protein
Molecular Weight:	69752 Da
Gene ID:	80321
NCBI Accession:	<a href="#">NP_077817</a>
Pathways:	<a href="#">M Phase</a>

## Application Details

Application Notes:	Optimal working dilution should be determined by the investigator.
Restrictions:	For Research Use only

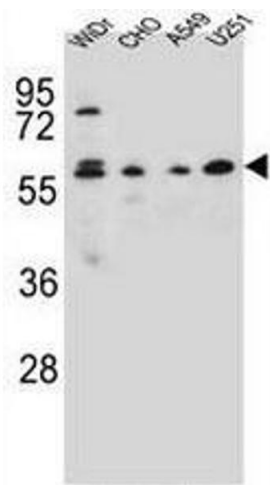
## Handling

Format:	Liquid
Concentration:	0.25 mg/mL
Buffer:	PBS, 0.09 % (W/V) sodium azide
Preservative:	Sodium azide
Precaution of Use:	This product contains sodium azide: a POISONOUS AND HAZARDOUS SUBSTANCE which should be handled by trained staff only.
Handling Advice:	Avoid repeated freezing and thawing.
Storage:	4 °C/-20 °C
Storage Comment:	Store undiluted at 2-8 °C for one month or (in aliquots) at -20 °C for longer.



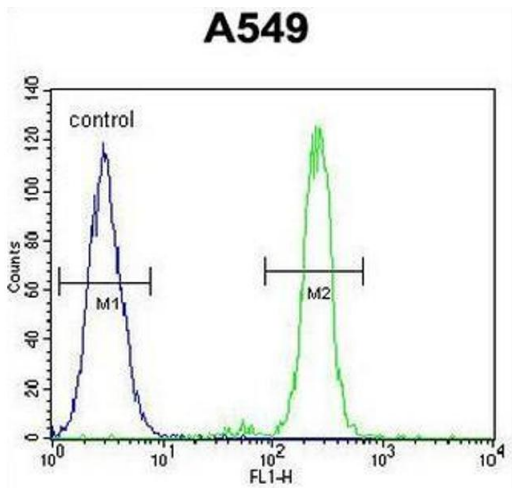
Immunohistochemistry (Paraffin-embedded Sections)

**Image 1.** CEP70 antibody (Center) immunohistochemistry analysis in formalin fixed and paraffin embedded human skin carcinoma followed by peroxidase conjugation of the secondary antibody and DAB staining. This data demonstrates the use of the CEP70 antibody (Center) for immunohistochemistry. Clinical relevance has not been evaluated.



Western Blotting

**Image 2.** CEP70 Antibody (Center) western blot analysis in WiDr,CHO,A549,U251 cell line lysates (35µg/lane).This demonstrates the CEP70 antibody detected the CEP70 protein (arrow).



Flow Cytometry

**Image 3.** CEP70 Antibody (Center) flow cytometric analysis of A549 cells (right histogram) compared to a negative control cell (left histogram).FITC-conjugated goat-anti-rabbit secondary antibodies were used for the analysis.