

Datasheet for ABIN951477

anti-CEP72 antibody (Middle Region)[Go to Product page](#)**1** Image

Overview

Quantity:	0.4 mL
Target:	CEP72
Binding Specificity:	AA 230-259, Middle Region
Reactivity:	Human
Host:	Rabbit
Clonality:	Polyclonal
Conjugate:	This CEP72 antibody is un-conjugated
Application:	Western Blotting (WB), Enzyme Immunoassay (EIA)

Product Details

Immunogen:	KLH conjugated synthetic peptide between 230-259 amino acids from the Central region of human CEP72
Isotype:	Ig Fraction
Specificity:	This antibody reacts to CEP72.
Cross-Reactivity (Details):	Species reactivity (tested):Human.
Purification:	Affinity chromatography on Protein A

Target Details

Target:	CEP72
Alternative Name:	CEP72 (CEP72 Products)

Target Details

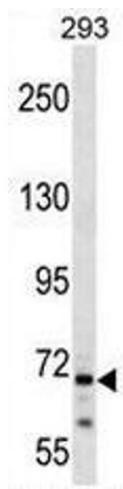
Background:	CEP72 is a member of the leucine-rich-repeat (LRR) superfamily of proteins. The protein is localized to the centrosome, a non-membraneous organelle that functions as the major microtubule-organizing center in animal cells.Synonyms: Centrosomal protein of 72 kDa, KIAA1519
Molecular Weight:	71718 Da
Gene ID:	55722
NCBI Accession:	NP_060610
Pathways:	M Phase

Application Details

Application Notes:	Optimal working dilution should be determined by the investigator.
Restrictions:	For Research Use only

Handling

Format:	Liquid
Concentration:	0.25 mg/mL
Buffer:	PBS, 0.09 % (W/V) sodium azide
Preservative:	Sodium azide
Precaution of Use:	This product contains sodium azide: a POISONOUS AND HAZARDOUS SUBSTANCE which should be handled by trained staff only.
Handling Advice:	Avoid repeated freezing and thawing.
Storage:	4 °C/-20 °C
Storage Comment:	Store undiluted at 2-8 °C for one month or (in aliquots) at -20 °C for longer.



Western Blotting

Image 1. CEP72 Antibody (Center) western blot analysis in 293 cell line lysates (35µg/lane). This demonstrates the CEP72 antibody detected the CEP72 protein (arrow).