

Datasheet for ABIN951482  
**anti-CES2 antibody (Middle Region)**

## 3 Images

[Go to Product page](#)

## Overview

Quantity:	0.4 mL
Target:	CES2
Binding Specificity:	AA 343-373, Middle Region
Reactivity:	Human
Host:	Rabbit
Clonality:	Polyclonal
Conjugate:	This CES2 antibody is un-conjugated
Application:	Western Blotting (WB), Flow Cytometry (FACS), Immunohistochemistry (Paraffin-embedded Sections) (IHC (p)), Enzyme Immunoassay (EIA)

## Product Details

Immunogen:	KLH conjugated synthetic peptide between 343-373 amino acids from the Central region of human CES2
Isotype:	Ig Fraction
Specificity:	This antibody reacts to CES2.
Cross-Reactivity (Details):	Species reactivity (tested):Human.
Purification:	Affinity chromatography on Protein A

## Target Details

Target:	CES2
---------	------

## Target Details

Alternative Name: CES2 / ICE ([CES2 Products](#))

Background: CES2 is a member of the carboxylesterase large family. The family members are responsible for the hydrolysis or transesterification of various xenobiotics, such as cocaine and heroin, and endogenous substrates with ester, thioester, or amide bonds. They may participate in fatty acyl and cholesterol ester metabolism, and may play a role in the blood-brain barrier system. The protein encoded by this gene is the major intestinal enzyme and functions in intestine drug clearance. Synonyms: CE-2, Carboxylesterase 2, hCE-2

Molecular Weight: 61807 Da

Gene ID: 8824

NCBI Accession: [NP\\_003860](#)

## Application Details

Application Notes: Optimal working dilution should be determined by the investigator.

Restrictions: For Research Use only

## Handling

Format: Liquid

Concentration: 0.25 mg/mL

Buffer: PBS, 0.09 % (W/V) sodium azide

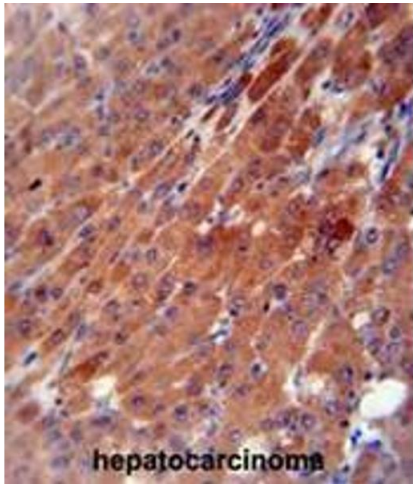
Preservative: Sodium azide

Precaution of Use: This product contains sodium azide: a POISONOUS AND HAZARDOUS SUBSTANCE which should be handled by trained staff only.

Handling Advice: Avoid repeated freezing and thawing.

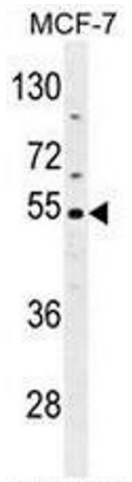
Storage: 4 °C/-20 °C

Storage Comment: Store undiluted at 2-8 °C for one month or (in aliquots) at -20 °C for longer.



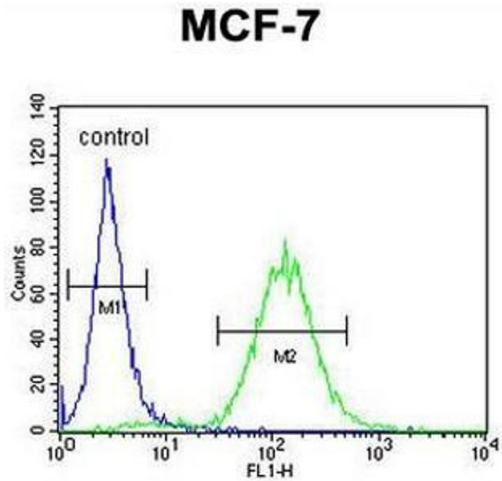
Immunohistochemistry (Paraffin-embedded Sections)

**Image 1.** CES2 antibody (Center) immunohistochemistry analysis in formalin fixed and paraffin embedded human hepatocarcinoma followed by peroxidase conjugation of the secondary antibody and DAB staining. This data demonstrates the use of the CES2 antibody (Center) for immunohistochemistry. Clinical relevance has not been evaluated.



Western Blotting

**Image 2.** CES2 Antibody (Center) western blot analysis in MCF-7 cell line lysates (35µg/lane).This demonstrates the CES2 antibody detected the CES2 protein (arrow).



Flow Cytometry

**Image 3.** CES2 Antibody (Center) flow cytometric analysis of MCF-7 cells (right histogram) compared to a negative control cell (left histogram).FITC-conjugated goat-anti-rabbit secondary antibodies were used for the analysis.