



[Go to Product page](#)

Datasheet for ABIN951484

anti-CES1P1 antibody (N-Term)

2 Images

Overview

Quantity:	0.4 mL
Target:	CES1P1
Binding Specificity:	AA 50-78, N-Term
Reactivity:	Human
Host:	Rabbit
Clonality:	Polyclonal
Conjugate:	This CES1P1 antibody is un-conjugated
Application:	Western Blotting (WB), Immunohistochemistry (Paraffin-embedded Sections) (IHC (p)), Enzyme Immunoassay (EIA)

Product Details

Immunogen:	KLH conjugated synthetic peptide between 50-78 amino acids from the N-terminal region of human CES4
Isotype:	Ig Fraction
Purification:	Affinity chromatography on Protein A

Target Details

Target:	CES1P1
Alternative Name:	CES4 (CES1P1 Products)
Background:	Synonyms: Putative inactive carboxylesterase 4

Target Details

Molecular Weight: 30679 Da

Gene ID: 9606

Application Details

Application Notes: Optimal working dilution should be determined by the investigator.

Restrictions: For Research Use only

Handling

Format: Liquid

Concentration: 0.25 mg/mL

Buffer: PBS 0.09 % (w/v) sodium azide

Preservative: Sodium azide

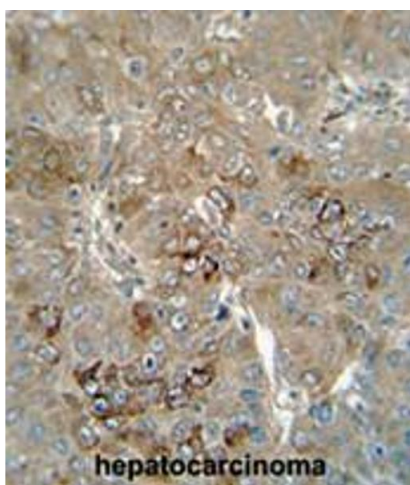
Precaution of Use: This product contains sodium azide: a POISONOUS AND HAZARDOUS SUBSTANCE which should be handled by trained staff only.

Handling Advice: Avoid repeated freezing and thawing.

Storage: 4 °C/-20 °C

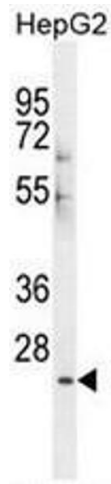
Storage Comment: Store the antibody undiluted at 2-8 °C for one month or (in aliquots) at -20 °C for longer.

Images



Immunohistochemistry (Paraffin-embedded Sections)

Image 1. CES4 antibody (N-term) immunohistochemistry analysis in formalin fixed and paraffin embedded human hepatocarcinoma followed by peroxidase conjugation of the secondary antibody and DAB staining. This data demonstrates the use of the CES4 antibody (N-term) for immunohistochemistry. Clinical relevance has not been evaluated.



Western Blotting

Image 2. CES4 Antibody (N-term) western blot analysis in HepG2 cell line lysates (35µg/lane). This demonstrates the CES4 antibody detected the CES4 protein (arrow).