

Datasheet for ABIN951485
anti-CES5A antibody (Middle Region)

2 Images

[Go to Product page](#)

Overview

Quantity:	0.4 mL
Target:	CES5A
Binding Specificity:	Middle Region
Reactivity:	Human
Host:	Rabbit
Clonality:	Polyclonal
Conjugate:	This CES5A antibody is un-conjugated
Application:	Western Blotting (WB), Immunohistochemistry (Paraffin-embedded Sections) (IHC (p)), Enzyme Immunoassay (EIA)

Product Details

Immunogen:	KLH conjugated synthetic peptide selected from the Center region of human CES7
Isotype:	Ig Fraction
Specificity:	This antibody reacts to CES7.
Cross-Reactivity (Details):	Species reactivity (tested):Human.
Purification:	Affinity chromatography on Protein A

Target Details

Target:	CES5A
Alternative Name:	CES7 (CES5A Products)

Target Details

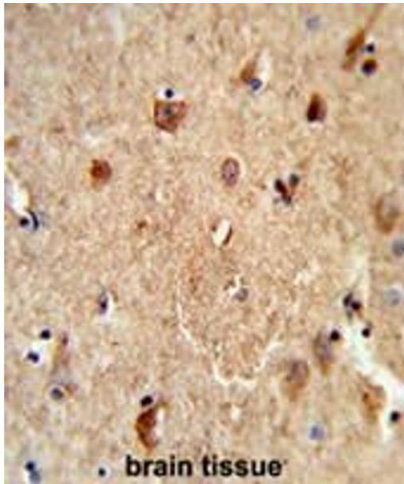
Background:	CES7 is involved in the detoxification of xenobiotics and in the activation of ester and amide prodrugs (By similarity).Synonyms: Carboxylesterase 7, Carboxylesterase-like urinary excreted protein homolog, Cauxin
Molecular Weight:	63926 Da
Gene ID:	221223
NCBI Accession:	NP_001137157

Application Details

Application Notes:	Optimal working dilution should be determined by the investigator.
Restrictions:	For Research Use only

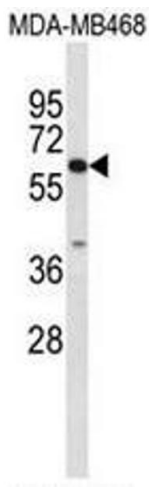
Handling

Format:	Liquid
Concentration:	0.25 mg/mL
Buffer:	PBS, 0.09 % (W/V) sodium azide
Preservative:	Sodium azide
Precaution of Use:	This product contains sodium azide: a POISONOUS AND HAZARDOUS SUBSTANCE which should be handled by trained staff only.
Handling Advice:	Avoid repeated freezing and thawing.
Storage:	4 °C/-20 °C
Storage Comment:	Store the antibody undiluted at 2-8 °C for one month or (in aliquots) at -20 °C for longer.



Immunohistochemistry (Paraffin-embedded Sections)

Image 1. Formalin-fixed and paraffin-embedded human brain tissue reacted with CES7 Antibody (Center), which was peroxidase-conjugated to the secondary antibody, followed by DAB staining. This data demonstrates the use of this antibody for immunohistochemistry; clinical relevance has not been evaluated.



Western Blotting

Image 2. Western blot analysis of CES7 Antibody (Center) in MDA-MB468 cell line lysates (35µg/lane). CES7 (arrow) was detected using the purified Pab.