



[Go to Product page](#)

Datasheet for ABIN951486
anti-CES4A antibody (C-Term)

2 Images

Overview

Quantity:	0.4 mL
Target:	CES4A
Binding Specificity:	AA 532-561, C-Term
Reactivity:	Human
Host:	Rabbit
Clonality:	Polyclonal
Conjugate:	This CES4A antibody is un-conjugated
Application:	Western Blotting (WB), Immunohistochemistry (Paraffin-embedded Sections) (IHC (p)), Enzyme Immunoassay (EIA)

Product Details

Immunogen:	KLH conjugated synthetic peptide between 532-561 amino acids from the C-terminal region of human CES8
Isotype:	Ig Fraction
Specificity:	This antibody reacts to CES8.
Cross-Reactivity (Details):	Species reactivity (tested):Human.
Purification:	Affinity chromatography on Protein A

Target Details

Target:	CES4A
---------	-------

Target Details

Alternative Name: CES8 ([CES4A Products](#))

Background: Synonyms: Carboxylesterase 8

Molecular Weight: 42kd Isoform 6. 63529 Da

Gene ID: 283848

NCBI Accession: [NP_001177130](#)

Application Details

Application Notes: Optimal working dilution should be determined by the investigator.

Restrictions: For Research Use only

Handling

Format: Liquid

Concentration: 0.25 mg/mL

Buffer: PBS, 0.09 % (W/V) sodium azide

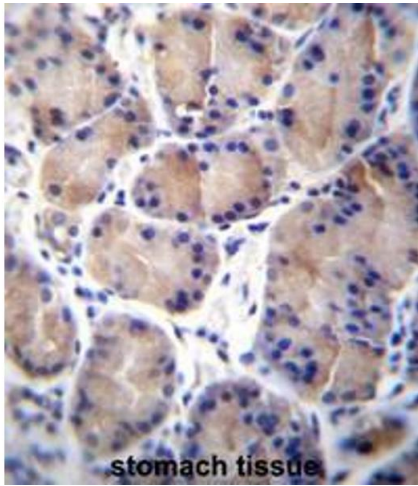
Preservative: Sodium azide

Precaution of Use: This product contains sodium azide: a POISONOUS AND HAZARDOUS SUBSTANCE which should be handled by trained staff only.

Handling Advice: Avoid repeated freezing and thawing.

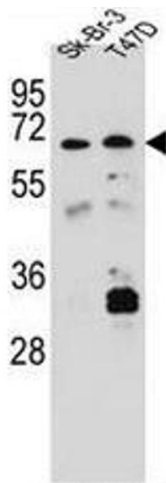
Storage: 4 °C/-20 °C

Storage Comment: Store the antibody undiluted at 2-8 °C for one month or (in aliquots) at -20 °C for longer.



Immunohistochemistry (Paraffin-embedded Sections)

Image 1. CES8 Antibody (C-term) immunohistochemistry analysis in formalin fixed and paraffin embedded human stomach tissue followed by peroxidase conjugation of the secondary antibody and DAB staining. This data demonstrates the use of CES8 Antibody (C-term) for immunohistochemistry. Clinical relevance has not been evaluated.



Western Blotting

Image 2. CES8 Antibody (C-term) western blot analysis in Sk-Br-3, T47D cell line lysates (35µg/lane). This demonstrates the CES8 antibody detected the CES8 protein (arrow).