

Datasheet for ABIN951500
anti-CHI3L2 antibody (N-Term)[Go to Product page](#)

2 Images

Overview

Quantity:	0.4 mL
Target:	CHI3L2
Binding Specificity:	AA 21-50, N-Term
Reactivity:	Human
Host:	Rabbit
Clonality:	Polyclonal
Conjugate:	This CHI3L2 antibody is un-conjugated
Application:	Western Blotting (WB), Enzyme Immunoassay (EIA)

Product Details

Immunogen:	KLH conjugated synthetic peptide between 21-50 amino acids from the N-terminal region of human CHI3L2
Isotype:	Ig Fraction
Specificity:	This antibody reacts to CHI3L2.
Cross-Reactivity (Details):	Species reactivity (tested):Human.
Purification:	Affinity chromatography on Protein A

Target Details

Target:	CHI3L2
Alternative Name:	CHI3L2 (CHI3L2 Products)

Target Details

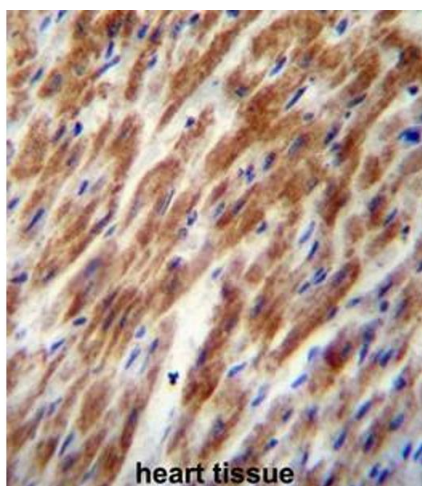
Background:	CHI3L2 may bind glycan structure with high affinity, but not heparin. Has no chitotriosidase activity.Synonyms: Chitinase-3-like protein 2, Chondrocyte protein 39, YKL-39
Molecular Weight:	43501 Da
Gene ID:	1117
NCBI Accession:	NP_001020368

Application Details

Application Notes:	Optimal working dilution should be determined by the investigator.
Restrictions:	For Research Use only

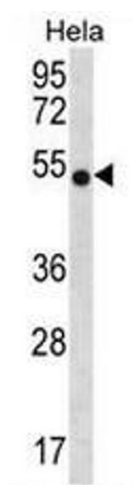
Handling

Format:	Liquid
Concentration:	0.25 mg/mL
Buffer:	PBS, 0.09 % (W/V) sodium azide
Preservative:	Sodium azide
Precaution of Use:	This product contains sodium azide: a POISONOUS AND HAZARDOUS SUBSTANCE which should be handled by trained staff only.
Handling Advice:	Avoid repeated freezing and thawing.
Storage:	4 °C/-20 °C
Storage Comment:	Store the antibody undiluted at 2-8 °C for one month or (in aliquots) at -20 °C for longer.



Immunohistochemistry (Paraffin-embedded Sections)

Image 1. CHI3L2 Antibody (N-term) immunohistochemistry analysis in formalin fixed and paraffin embedded human heart tissue followed by peroxidase conjugation of the secondary antibody and DAB staining. This data demonstrates the use of CHI3L2 Antibody (N-term) for immunohistochemistry. Clinical relevance has not been evaluated.



Western Blotting

Image 2. CHI3L2 Antibody (N-term) western blot analysis in Hela cell line lysates (35µg/lane). This demonstrates the CHI3L2 antibody detected the CHI3L2 protein (arrow).