

Datasheet for ABIN951501
anti-CHIC2 antibody (C-Term)



[Go to Product page](#)

1 Image

Overview

Quantity:	0.4 mL
Target:	CHIC2
Binding Specificity:	AA 145-173, C-Term
Reactivity:	Human, Mouse
Host:	Rabbit
Clonality:	Polyclonal
Conjugate:	This CHIC2 antibody is un-conjugated
Application:	Western Blotting (WB), Enzyme Immunoassay (EIA)

Product Details

Immunogen:	KLH conjugated synthetic peptide from the C-terminal region (between 145-173 aa) of Human CHIC2.
Isotype:	Ig Fraction
Specificity:	This antibody detects CHIC2 (C-term).
Cross-Reactivity (Details):	Species reactivity (tested): Human, Mouse
Purification:	Purified through a protein A column; followed by peptide affinity purification.

Target Details

Target:	CHIC2
Alternative Name:	CHIC2 (CHIC2 Products)

Target Details

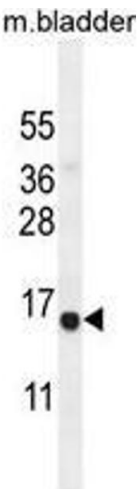
Background:	CHIC2 - member of the CHIC protein family - contains a cysteine-rich hydrophobic (CHIC) motif. It is localized to vesicular structures and the plasma membrane.Synonyms: BTL, BrX-like translocated in leukemia, Cysteine-rich hydrophobic domain 2 protein
Gene ID:	26511
NCBI Accession:	NP_036242

Application Details

Application Notes:	Optimal working dilution should be determined by the investigator.
Restrictions:	For Research Use only

Handling

Format:	Liquid
Concentration:	0.25 mg/mL
Buffer:	PBS with 0.09 % (W/V) Sodium Azide.
Preservative:	Sodium azide
Precaution of Use:	This product contains sodium azide: a POISONOUS AND HAZARDOUS SUBSTANCE which should be handled by trained staff only.
Handling Advice:	Avoid repeated freezing and thawing.
Storage:	4 °C/-20 °C
Storage Comment:	Store the antibody undiluted at 2-8 °C for one month or (in aliquots) at -20 °C for longer.



Western Blotting

Image 1. Western blot analysis in mouse bladder tissue lysates (35ug/lane) using CHIC2 antibody . This demonstrates the CHIC2 antibody detected the CHIC2 protein (arrow).