

Datasheet for ABIN951507
anti-CHPT1 antibody (N-Term)



[Go to Product page](#)

2 Images

Overview

Quantity:	0.4 mL
Target:	CHPT1
Binding Specificity:	AA 14-41, N-Term
Reactivity:	Human
Host:	Rabbit
Clonality:	Polyclonal
Conjugate:	This CHPT1 antibody is un-conjugated
Application:	Western Blotting (WB), Flow Cytometry (FACS), Enzyme Immunoassay (EIA)

Product Details

Immunogen:	Synthetic peptide - KLH conjugated - corresponding to the N-terminal region (between 14-41aa) of human Cholinephosphotransferase 1/CHPT1.
Isotype:	Ig Fraction
Specificity:	This antibody detects human Cholinephosphotransferase 1 at N-term
Cross-Reactivity (Details):	Species reactivity (tested):Human
Purification:	Purified through a protein A column; followed by peptide affinity purification.

Target Details

Target:	CHPT1
Alternative Name:	Cholinephosphotransferase 1 (CHPT1 Products)

Target Details

Background:	Synonyms: AAPT1-like protein, CHPT1, CPT1, Diacylglycerol cholinephosphotransferase 1, MSTP022
Gene ID:	56994
NCBI Accession:	NP_064629

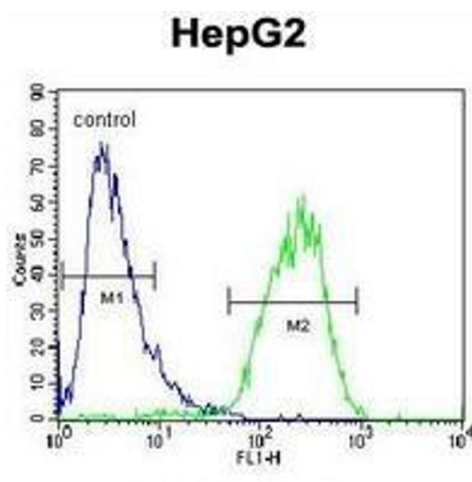
Application Details

Application Notes:	Optimal working dilution should be determined by the investigator.
Restrictions:	For Research Use only

Handling

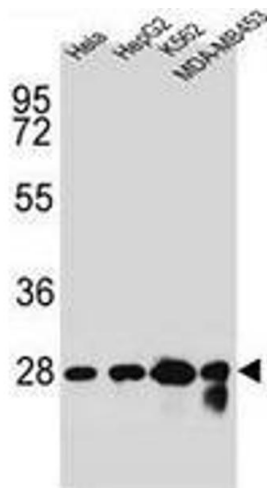
Format:	Liquid
Concentration:	0.25 mg/mL
Buffer:	PBS with 0.09 % (W/V) Sodium Azide.
Preservative:	Sodium azide
Precaution of Use:	This product contains sodium azide: a POISONOUS AND HAZARDOUS SUBSTANCE which should be handled by trained staff only.
Handling Advice:	Avoid repeated freezing and thawing.
Storage:	4 °C/-20 °C
Storage Comment:	Store the antibody undiluted at 2-8 °C for one month or (in aliquots) at -20 °C for longer.

Images



Flow Cytometry

Image 1. Flow cytometric analysis of HepG2 cells (right histogram) compared to a negative control cell (left histogram) using Cholinephosphotransferase 1 Antibody (N-term), followed by FITC-conjugated goat-anti-rabbit secondary antibodies.



Western Blotting

Image 2. Western blot analysis in HeLa, HepG2, K562, MDA-MB453 cell line lysates (35ug/lane) using Cholinephosphotransferase 1 Antibody (N-term). This demonstrates the CHPT1 antibody detected the CHPT1 protein (arrow).