

Datasheet for ABIN951509
anti-CHPF antibody (Middle Region)

3 Images

[Go to Product page](#)

Overview

Quantity:	0.4 mL
Target:	CHPF
Binding Specificity:	Middle Region
Reactivity:	Human, Mouse
Host:	Rabbit
Clonality:	Polyclonal
Conjugate:	This CHPF antibody is un-conjugated
Application:	Western Blotting (WB), Flow Cytometry (FACS), Immunohistochemistry (Paraffin-embedded Sections) (IHC (p)), Enzyme Immunoassay (EIA)

Product Details

Immunogen:	Synthetic peptide - KLH conjugated - corresponding to the center region of human Chondroitin sulfate synthase 2/CHPF.
Isotype:	Ig Fraction
Specificity:	This antibody detects Chondroitin sulfate synthase 2/CHPF.
Cross-Reactivity (Details):	Species reactivity (tested): Human, Mouse
Purification:	Purified through a protein A column; followed by peptide affinity purification.

Target Details

Target:	CHPF
---------	------

Target Details

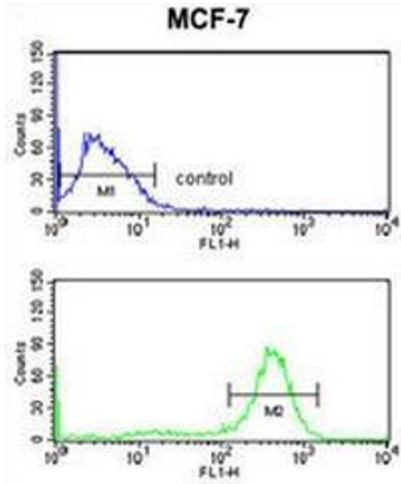
Alternative Name:	Chondroitin Sulfate Synthase 2 (CHPF Products)
Background:	CHPF is a protein that has both beta-1,3-glucuronic acid and beta-1,4-N-acetylgalactosamine transferase activity. Transfers glucuronic acid (GlcUA) from UDP-GlcUA and N-acetylgalactosamine (GalNAc) from UDP-GalNAc to the non-reducing end of the elongating chondroitin polymer. Synonyms: CHPF, CSS2, Chondroitin glucuronyltransferase II, Chondroitin-polymerizing factor, Glucuronosyl-N-acetylgalactosaminyl-proteoglycan 4-beta-N-acetylgalactosaminyltransferase II, N-acetylgalactosaminyl-proteoglycan 3-beta-glucuronosyltransferase II, N-acetylgalactosaminyltransferase
Gene ID:	79586
NCBI Accession:	NP_001182660
Pathways:	Glycosaminoglycan Metabolic Process , SARS-CoV-2 Protein Interactome

Application Details

Application Notes:	Optimal working dilution should be determined by the investigator.
Restrictions:	For Research Use only

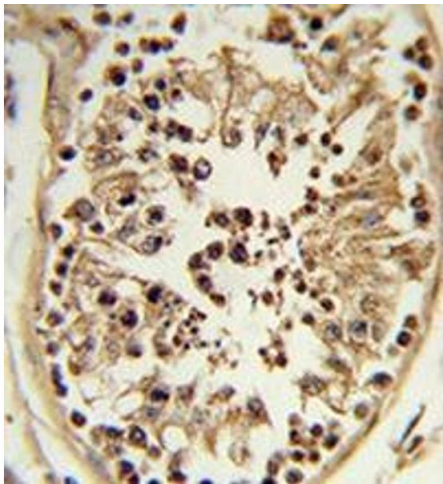
Handling

Format:	Liquid
Concentration:	0.25 mg/mL
Buffer:	PBS with 0.09 % (W/V) Sodium Azide.
Preservative:	Sodium azide
Precaution of Use:	This product contains sodium azide: a POISONOUS AND HAZARDOUS SUBSTANCE which should be handled by trained staff only.
Handling Advice:	Avoid repeated freezing and thawing.
Storage:	4 °C/-20 °C
Storage Comment:	Store the antibody undiluted at 2-8 °C for one month or (in aliquots) at -20 °C for longer.



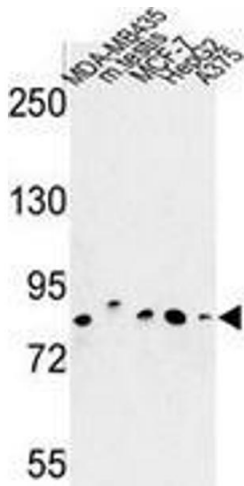
Flow Cytometry

Image 1. Flow cytometry analysis of MCF-7 cells (bottom histogram) compared to a negative control cell (top histogram) using Chondroitin sulfate synthase 2 Antibody , followed by FITC-conjugated goat-anti-rabbit secondary antibodies.



Immunohistochemistry (Paraffin-embedded Sections)

Image 2. Immunohistochemistry analysis of human testis tissue (formalin-fixed, paraffin-embedded) using Chondroitin sulfate synthase 2 Antibody , which was peroxidase-conjugated to the secondary antibody, followed by DAB staining. This data demonstrates the use of this antibody for IHC; clinical relevance has not been evaluated.



Western Blotting

Image 3. Western blot analysis of CHPF (arrow) in MDA-MB435, MCF-7, HepG2, A375 cell line and mouse testis tissue lysates (35ug/lane) using Chondroitin sulfate synthase 2