

Datasheet for ABIN951513
anti-CHRD1 antibody (N-Term)

2 Images

[Go to Product page](#)

Overview

Quantity:	0.4 mL
Target:	CHRD1
Binding Specificity:	AA 5-35, N-Term
Reactivity:	Human
Host:	Rabbit
Clonality:	Polyclonal
Conjugate:	This CHRD1 antibody is un-conjugated
Application:	Western Blotting (WB), Immunohistochemistry (Paraffin-embedded Sections) (IHC (p)), Enzyme Immunoassay (EIA)

Product Details

Immunogen:	Synthetic peptide - KLH conjugated - corresponding to the N-terminal region (between 5-35aa) of human CHRD1 / NRLN1
Isotype:	Ig Fraction
Specificity:	This antibody recognizes CHRD1 / NRLN1.
Cross-Reactivity (Details):	Species reactivity (tested):Human
Purification:	Purified through a Protein A column followed by peptide affinity purification

Target Details

Target:	CHRD1
---------	-------

Target Details

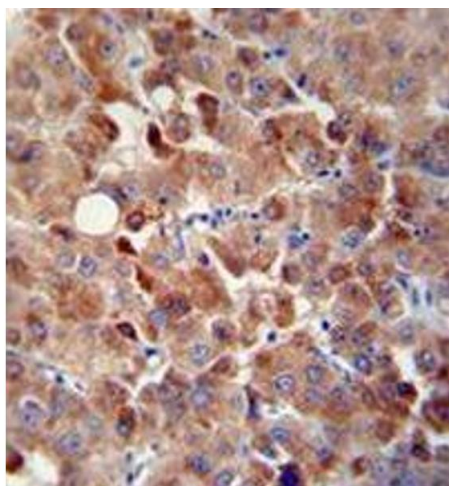
Alternative Name:	CHRD1 / NRLN1 (CHRD1 Products)
Background:	CHRD1 is an antagonist of bone morphogenetic protein 4. The encoded protein may play a role in topographic retinotectal projection and in the regulation of retinal angiogenesis in response to hypoxia. Alternatively spliced transcript variants encoding different isoforms have been described.Synonyms: Chordin-like protein 1, Neuralin-1, Neurogenesin-1, Ventroptin
Gene ID:	91851
NCBI Accession:	NP_001137453

Application Details

Application Notes:	Optimal working dilution should be determined by the investigator.
Restrictions:	For Research Use only

Handling

Format:	Liquid
Concentration:	0.25 mg/mL
Buffer:	PBS with 0.09 % (W/V) Sodium azide
Preservative:	Sodium azide
Precaution of Use:	This product contains sodium azide: a POISONOUS AND HAZARDOUS SUBSTANCE which should be handled by trained staff only.
Handling Advice:	Avoid repeated freezing and thawing.
Storage:	4 °C/-20 °C
Storage Comment:	Store undiluted at 2-8 °C for one month or (in aliquots) at -20 °C for longer.



Immunohistochemistry (Paraffin-embedded Sections)

Image 1. Immunohistochemistry analysis in human hepatocarcinoma using CHRDL1 / NRLN1 Antibody (N-term), followed by peroxidase conjugation of the secondary antibody and DAB staining. This data demonstrates the use of the CHRDL1 antibody for IHC. Clinical relevance has not been evaluated.



Western Blotting

Image 2. Western blot analysis in 293 cell line lysates (35ug/lane) using CHRDL1 / NRLN1 Antibody (N-term). This demonstrates the CHRDL1 antibody detected the CHRDL1 protein (arrow).