



[Go to Product page](#)

Datasheet for ABIN951527
anti-CI150 antibody (N-Term)

3 Images

Overview

Quantity:	0.4 mL
Target:	CI150
Binding Specificity:	AA 11-40, N-Term
Reactivity:	Human
Host:	Rabbit
Clonality:	Polyclonal
Conjugate:	This CI150 antibody is un-conjugated
Application:	Western Blotting (WB), Flow Cytometry (FACS), Immunohistochemistry (Paraffin-embedded Sections) (IHC (p)), Enzyme Immunoassay (EIA)

Product Details

Immunogen:	KLH conjugated synthetic peptide between 11-40 amino acids from the N-terminal region of human CI150
Isotype:	Ig Fraction
Specificity:	This antibody reacts to CI150.
Cross-Reactivity (Details):	Species reactivity (tested):Human.
Purification:	Affinity chromatography on Protein A

Target Details

Target:	CI150
---------	-------

Target Details

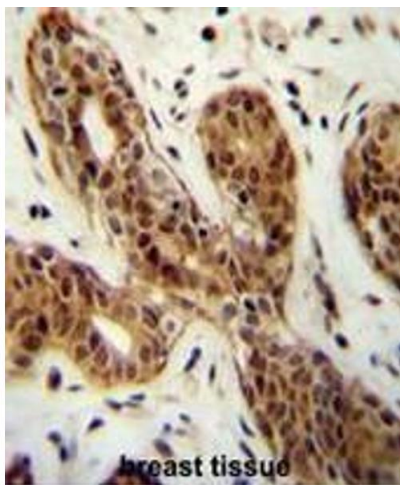
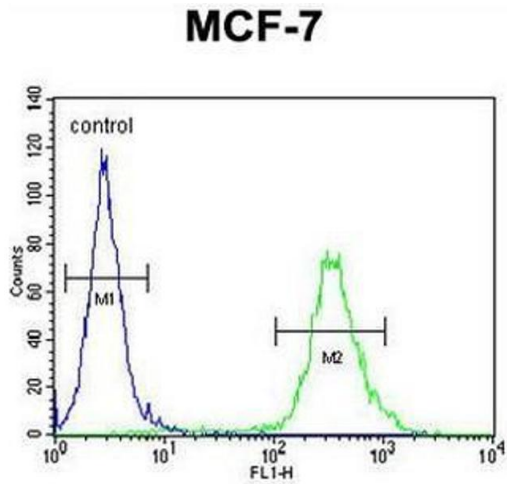
Alternative Name:	CI150 (CI150 Products)
Background:	Synonyms: C9orf150, Uncharacterized protein C9orf150
Molecular Weight:	24583 Da
Gene ID:	286343
NCBI Accession:	NP_981948

Application Details

Application Notes:	Optimal working dilution should be determined by the investigator.
Restrictions:	For Research Use only

Handling

Format:	Liquid
Concentration:	0.25 mg/mL
Buffer:	PBS, 0.09 % (W/V) sodium azide
Preservative:	Sodium azide
Precaution of Use:	This product contains sodium azide: a POISONOUS AND HAZARDOUS SUBSTANCE which should be handled by trained staff only.
Handling Advice:	Avoid repeated freezing and thawing.
Storage:	4 °C/-20 °C
Storage Comment:	Store undiluted at 2-8 °C for one month or (in aliquots) at -20 °C for longer.



Flow Cytometry

Image 1. CI150 Antibody (N-term) flow cytometric analysis of MCF-7 cells (right histogram) compared to a negative control cell (left histogram). FITC-conjugated goat-anti-rabbit secondary antibodies were used for the analysis.

Immunohistochemistry (Paraffin-embedded Sections)

Image 2. CI150 Antibody (N-term) immunohistochemistry analysis in formalin fixed and paraffin embedded human breast tissue followed by peroxidase conjugation of the secondary antibody and DAB staining. This data demonstrates the use of the CI150 Antibody (N-term) for immunohistochemistry. Clinical relevance has not been evaluated.

Western Blotting

Image 3. CI150 Antibody (N-term) western blot analysis in MCF-7 cell line lysates (35µg/lane). This demonstrates the CI150 antibody detected the CI150 protein (arrow).