

Datasheet for ABIN951532  
**anti-CIRH1A antibody (N-Term)**

## 3 Images

[Go to Product page](#)

## Overview

|                      |   |
|----------------------|---|
| Quantity:            | 0.4 mL  |
| Target:              | CIRH1A  |
| Binding Specificity: | N-Term  |
| Reactivity:          | Human   |
| Host:                | Rabbit  |
| Clonality:           | Polyclonal  |
| Conjugate:           | This CIRH1A antibody is un-conjugated   |
| Application:         | Western Blotting (WB), Flow Cytometry (FACS), Immunohistochemistry (Paraffin-embedded Sections) (IHC (p)), Enzyme Immunoassay (EIA) |

## Product Details

|                             |  |
|-----------------------------|--|
| Immunogen:                  | KLH conjugated synthetic peptide selected from the N-terminal region of human CIRH1A |
| Isotype:                    | Ig Fraction  |
| Specificity:                | This antibody reacts to CIRH1A.  |
| Cross-Reactivity (Details): | Species reactivity (tested):Human.   |
| Purification:               | Affinity chromatography on Protein A   |

## Target Details

|                   |  |
|-------------------|--|
| Target:           | CIRH1A                                     |
| Alternative Name: | Cirhin ( <a href="#">CIRH1A Products</a> ) |

## Target Details

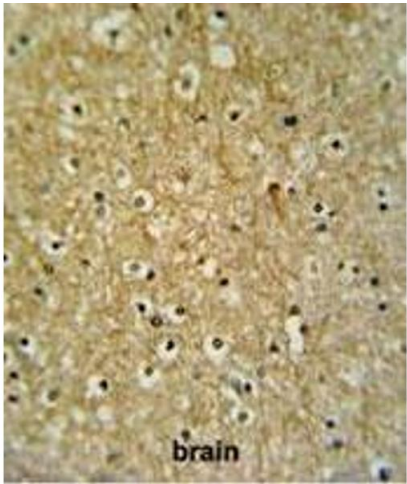
|                   |  |
|-------------------|--|
| Background:       | CIRH1A encodes a WD40-repeat-containing protein that is localized to the nucleolus. Mutation of this gene causes North American Indian childhood cirrhosis, a severe intrahepatic cholestasis that results in transient neonatal jaundice, and progresses to periportal fibrosis and cirrhosis in childhood and adolescence.Synonyms: CIRH1A, KIAA1988 |
| Molecular Weight: | 76890 Da   |
| Gene ID:          | 84916  |
| NCBI Accession:   | <a href="#">NP_116219</a>  |

## Application Details

|                    |  |
|--------------------|--|
| Application Notes: | Optimal working dilution should be determined by the investigator. |
| Restrictions:      | For Research Use only  |

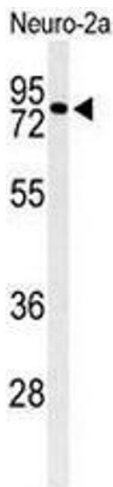
## Handling

|                    |  |
|--------------------|--|
| Format:            | Liquid   |
| Concentration:     | 0.25 mg/mL   |
| Buffer:            | PBS, 0.09 % (W/V) sodium azide   |
| Preservative:      | Sodium azide   |
| Precaution of Use: | This product contains sodium azide: a POISONOUS AND HAZARDOUS SUBSTANCE which should be handled by trained staff only. |
| Handling Advice:   | Avoid repeated freezing and thawing.   |
| Storage:           | 4 °C/-20 °C  |
| Storage Comment:   | Store undiluted at 2-8 °C for one month or (in aliquots) at -20 °C for longer.   |



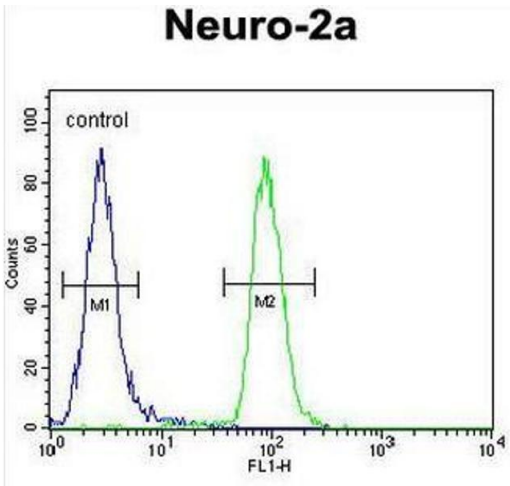
Immunohistochemistry (Paraffin-embedded Sections)

**Image 1.** CIRH1A Antibody (N-term) IHC analysis in formalin fixed and paraffin embedded brain tissue followed by peroxidase conjugation of the secondary antibody and DAB staining. This data demonstrates the use of the CIRH1A Antibody (N-term) for immunohistochemistry. Clinical relevance has not been evaluated.



Western Blotting

**Image 2.** Western blot analysis of CIRH1A Antibody (N-term) in Neuro-2a cell line lysates (35µg/lane). CIRH1A (arrow) was detected using the purified Pab.



Flow Cytometry

**Image 3.** CIRH1A Antibody (N-term) flow cytometric analysis of Neuro-2a cells (right histogram) compared to a negative control cell (left histogram).FITC-conjugated goat-anti-rabbit secondary antibodies were used for the analysis.