

Datasheet for ABIN951533  
**anti-CITED2 antibody (C-Term)**[Go to Product page](#)

## 2 Images

## Overview

Quantity:	0.4 mL
Target:	CITED2
Binding Specificity:	AA 207-234, C-Term
Reactivity:	Human, Mouse
Host:	Rabbit
Clonality:	Polyclonal
Conjugate:	This CITED2 antibody is un-conjugated
Application:	Western Blotting (WB), Immunofluorescence (IF), Enzyme Immunoassay (EIA)

## Product Details

Immunogen:	KLH conjugated synthetic peptide between 207-234 amino acids from the C-terminal region of human CITED2
Isotype:	Ig Fraction
Specificity:	This antibody reacts to CITED2.
Cross-Reactivity (Details):	Species reactivity (tested): Human and Mouse.
Purification:	Affinity chromatography on Protein A

## Target Details

Target:	CITED2
Alternative Name:	CITED2 ( <a href="#">CITED2 Products</a> )

## Target Details

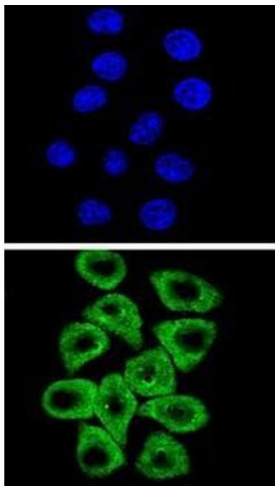
Background:	The protein encoded by this gene inhibits transactivation of HIF1A-induced genes by competing with binding of HIF1a to p300-CH1. Mutations in this gene are a cause of cardiac septal defects. Three transcript variants encoding the same protein have been found for this gene.Synonyms: Cbp/p300-interacting transactivator 2, MRG1, MSG-related protein 1, P35srj
Molecular Weight:	28497 Da
Gene ID:	10370
NCBI Accession:	<a href="#">NP_001161860</a>
Pathways:	<a href="#">Tube Formation</a>

## Application Details

Application Notes:	Optimal working dilution should be determined by the investigator.
Restrictions:	For Research Use only

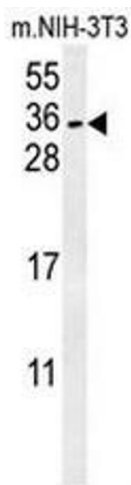
## Handling

Format:	Liquid
Concentration:	0.25 mg/mL
Buffer:	PBS, 0.09 % (W/V) sodium azide
Preservative:	Sodium azide
Precaution of Use:	This product contains sodium azide: a POISONOUS AND HAZARDOUS SUBSTANCE which should be handled by trained staff only.
Handling Advice:	Avoid repeated freezing and thawing.
Storage:	4 °C/-20 °C
Storage Comment:	Store undiluted at 2-8 °C for one month or (in aliquots) at -20 °C for longer.



Immunofluorescence

**Image 1.** Confocal immunofluorescent analysis of CITED2 Antibody (C-term) with Hela cell followed by Alexa Fluor® 489-conjugated goat anti-rabbit IgG (green). DAPI was used to stain the cell nuclear (blue).



Western Blotting

**Image 2.** CITED2 Antibody (C-term) western blot analysis in mouse NIH-3T3 cell line lysates (15µg/lane). This demonstrates the CITED2 antibody detected CITED2 protein (arrow).