

Datasheet for ABIN951541

anti-CLASP2 antibody (AA 1005-1034)

3 Images

[Go to Product page](#)

Overview

Quantity:	0.4 mL
Target:	CLASP2
Binding Specificity:	AA 1005-1034
Reactivity:	Human, Mouse
Host:	Rabbit
Clonality:	Polyclonal
Conjugate:	This CLASP2 antibody is un-conjugated
Application:	Western Blotting (WB), Flow Cytometry (FACS), Enzyme Immunoassay (EIA)

Product Details

Immunogen:	KLH conjugated synthetic peptide between 1005~1034 amino acids from the Y1019 region of human CLASP2
Isotype:	Ig Fraction
Cross-Reactivity (Details):	Species reactivity (tested): Human and Mouse.
Purification:	Affinity chromatography on Protein A

Target Details

Target:	CLASP2
Alternative Name:	CLASP2 (CLASP2 Products)
Background:	CLASP2 is microtubule plus-end tracking protein that promotes the stabilization of dynamic

Target Details

microtubules. Required for the polarization of the cytoplasmic microtubule arrays in migrating cells towards the leading edge of the cell. May act at the cell cortex to enhance the frequency of rescue of depolymerizing microtubules by attaching their plus-ends to cortical platforms composed of ERC1 and PHLDB2. This cortical microtubule stabilizing activity is regulated at least in part by phosphatidylinositol 3-kinase signaling. Also performs a similar stabilizing function at the kinetochore which is essential for the bipolar alignment of chromosomes on the mitotic spindle. Synonyms: CLIP-associating protein 2, Cytoplasmic linker-associated protein 2, KIAA0627, Protein Orbit homolog 2, hOrbit2

Molecular Weight: 141133 Da

Gene ID: 9606

Pathways: [Microtubule Dynamics](#), [Maintenance of Protein Location](#)

Application Details

Application Notes: Optimal working dilution should be determined by the investigator.

Restrictions: For Research Use only

Handling

Format: Liquid

Concentration: 0.25 mg/mL

Buffer: PBS, 0.09 % (W/V) sodium azide

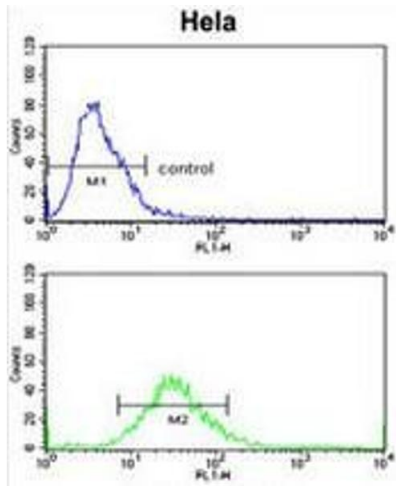
Preservative: Sodium azide

Precaution of Use: This product contains sodium azide: a POISONOUS AND HAZARDOUS SUBSTANCE which should be handled by trained staff only.

Handling Advice: Avoid repeated freezing and thawing.

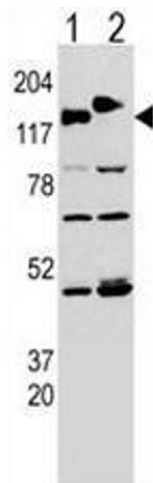
Storage: 4 °C/-20 °C

Storage Comment: Store undiluted at 2-8 °C for one month or (in aliquots) at -20 °C for longer.



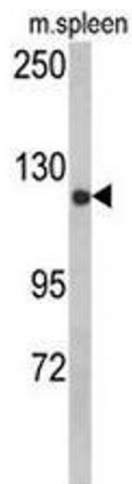
Flow Cytometry

Image 1. CLASP2 Antibody (pTyr1019) flow cytometric analysis of HeLa cells (bottom histogram) compared to a negative control cell (top histogram). FITC-conjugated goat-anti-rabbit secondary antibodies were used for the analysis.



Western Blotting

Image 2. Western blot analysis of CLASP (arrow) using rabbit polyclonal CLASP Antibody (pTyr1019). 293 cell lysates transfected with the ACADL gene (Lane 1) and with the GFP-CLASP (Lane 2).



Western Blotting

Image 3. Western blot analysis of CLASP2 Antibody (pTyr1019) in mouse spleen tissue lysates (35µg/lane). CLASP2 (arrow) was detected using the purified Pab.