

Datasheet for ABIN951544

anti-Claudin 15 antibody (Middle Region)**2** Images[Go to Product page](#)

Overview

Quantity:	0.4 mL
Target:	Claudin 15 (CLDN15)
Binding Specificity:	AA 135-165, Middle Region
Reactivity:	Human
Host:	Rabbit
Clonality:	Polyclonal
Conjugate:	This Claudin 15 antibody is un-conjugated
Application:	Western Blotting (WB), Flow Cytometry (FACS), Enzyme Immunoassay (EIA)

Product Details

Immunogen:	KLH conjugated synthetic peptide between 135~165 amino acids from the Central region of human CLDN15
Isotype:	Ig Fraction
Specificity:	This antibody reacts to CLDN15.
Cross-Reactivity (Details):	Species reactivity (tested):Human.
Purification:	Affinity chromatography on Protein A

Target Details

Target:	Claudin 15 (CLDN15)
Alternative Name:	Claudin-15 / CLDN15 (CLDN15 Products)

Target Details

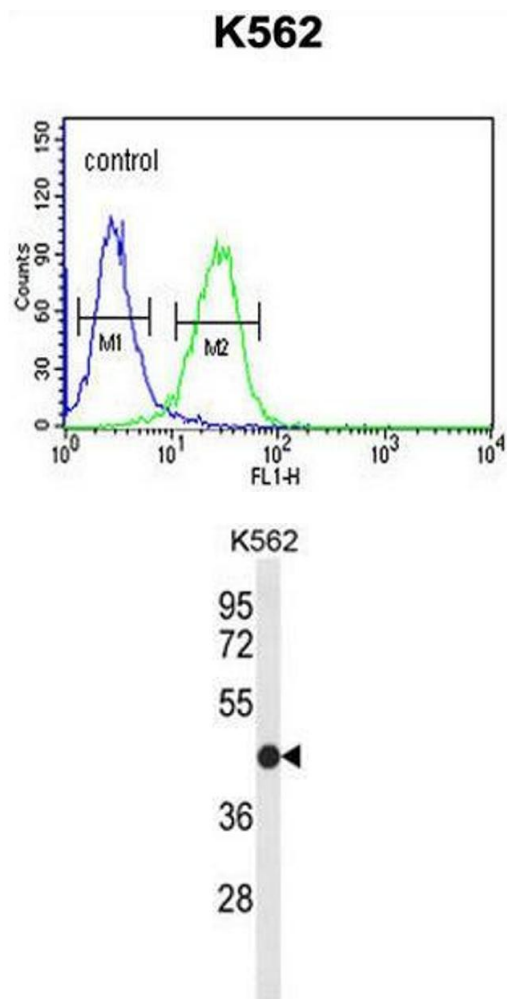
Background:	Plays a major role in tight junction specific obliteration of the intercellular space, through calcium independent cell adhesion activity.
Molecular Weight:	24356 Da
Gene ID:	24146
NCBI Accession:	NP_001172009
Pathways:	Cell-Cell Junction Organization , Hepatitis C

Application Details

Application Notes:	Optimal working dilution should be determined by the investigator.
Restrictions:	For Research Use only

Handling

Format:	Liquid
Concentration:	0.25 mg/mL
Buffer:	PBS, 0.09 % (W/V) sodium azide
Preservative:	Sodium azide
Precaution of Use:	This product contains sodium azide: a POISONOUS AND HAZARDOUS SUBSTANCE which should be handled by trained staff only.
Handling Advice:	Avoid repeated freezing and thawing.
Storage:	4 °C/-20 °C
Storage Comment:	Store undiluted at 2-8 °C for one month or (in aliquots) at -20 °C for longer.



Flow Cytometry

Image 1. CLDN15 Antibody (Center) flow cytometric analysis of K562 cells (right histogram) compared to a negative control cell (left histogram).FITC-conjugated goat-anti-rabbit secondary antibodies were used for the analysis.

Western Blotting

Image 2. Western blot analysis of CLDN15 Antibody (Center) in K562 cell line lysates (35µg/lane). CLDN15 (arrow) was detected using the purified Pab.