



[Go to Product page](#)

Datasheet for ABIN951549

anti-Claudin 23 antibody (C-Term)

2 Images

Overview

Quantity:	0.4 mL
Target:	Claudin 23 (CLDN23)
Binding Specificity:	AA 235-265, C-Term
Reactivity:	Human, Mouse
Host:	Rabbit
Clonality:	Polyclonal
Conjugate:	This Claudin 23 antibody is un-conjugated
Application:	Western Blotting (WB), Immunohistochemistry (Paraffin-embedded Sections) (IHC (p)), Enzyme Immunoassay (EIA)

Product Details

Immunogen:	KLH conjugated synthetic peptide between 235~265 amino acids from the C-terminal region of human CLDN23
Isotype:	Ig Fraction
Specificity:	This antibody reacts to CLDN23.
Cross-Reactivity (Details):	Species reactivity (tested):Human and Mouse.
Purification:	Affinity chromatography on Protein A

Target Details

Target:	Claudin 23 (CLDN23)
---------	---------------------

Target Details

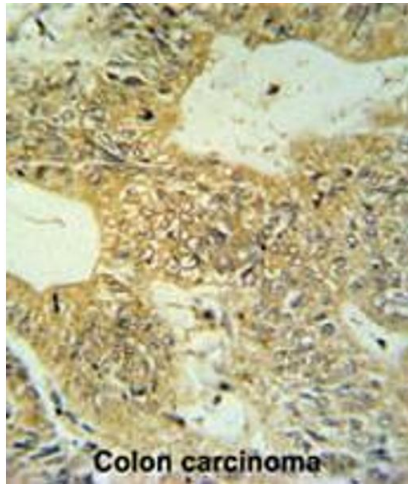
Alternative Name:	Claudin-23 / CLDN23 (CLDN23 Products)
Background:	CLDN23 is a four-transmembrane protein with WWCC motif, defined by W-X(17-22)-W-X(2)-C-X(8-10)-C. It is a candidate tumor suppressor gene implicated in intestinal-type gastric cancer.
Molecular Weight:	31915 Da
Gene ID:	137075
NCBI Accession:	NP_919260
Pathways:	Cell-Cell Junction Organization , Hepatitis C

Application Details

Application Notes:	Optimal working dilution should be determined by the investigator.
Restrictions:	For Research Use only

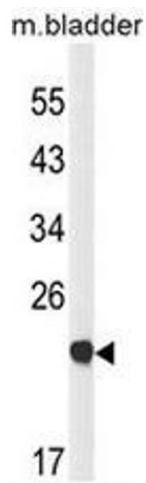
Handling

Format:	Liquid
Concentration:	0.25 mg/mL
Buffer:	PBS, 0.09 % (W/V) sodium azide
Preservative:	Sodium azide
Precaution of Use:	This product contains sodium azide: a POISONOUS AND HAZARDOUS SUBSTANCE which should be handled by trained staff only.
Handling Advice:	Avoid repeated freezing and thawing.
Storage:	4 °C/-20 °C
Storage Comment:	Store undiluted at 2-8 °C for one month or (in aliquots) at -20 °C for longer.



Immunohistochemistry (Paraffin-embedded Sections)

Image 1. CLDN23 Antibody (C-term) IHC analysis in formalin fixed and paraffin embedded colon carcinoma followed by peroxidase conjugation of the secondary antibody and DAB staining. This data demonstrates the use of the CLDN23 Antibody (C-term) for immunohistochemistry. Clinical relevance has not been evaluated.



Western Blotting

Image 2. Western blot analysis of CLDN23 Antibody (C-term) in mouse bladder tissue lysates (35µg/lane). CLDN23 (arrow) was detected using the purified Pab.