

Datasheet for ABIN951552
anti-Claudin 7 antibody (C-Term)

3 Images

[Go to Product page](#)

Overview

Quantity:	0.4 mL
Target:	Claudin 7 (CLDN7)
Binding Specificity:	AA 179-209, C-Term
Reactivity:	Human
Host:	Rabbit
Clonality:	Polyclonal
Conjugate:	This Claudin 7 antibody is un-conjugated
Application:	Western Blotting (WB), Immunohistochemistry (Paraffin-embedded Sections) (IHC (p)), Flow Cytometry (FACS), Enzyme Immunoassay (EIA)

Product Details

Immunogen:	KLH conjugated synthetic peptide between 179-209 amino acids from the C-terminal region of human CLDN7
Isotype:	Ig Fraction
Specificity:	This antibody reacts to CLDN7.
Cross-Reactivity (Details):	Species reactivity (tested):Human.
Purification:	Affinity chromatography on Protein A

Target Details

Target:	Claudin 7 (CLDN7)
---------	-------------------

Target Details

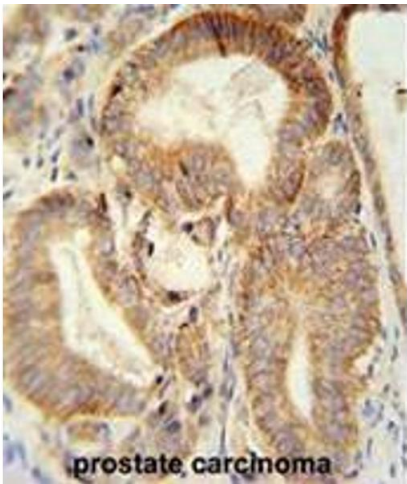
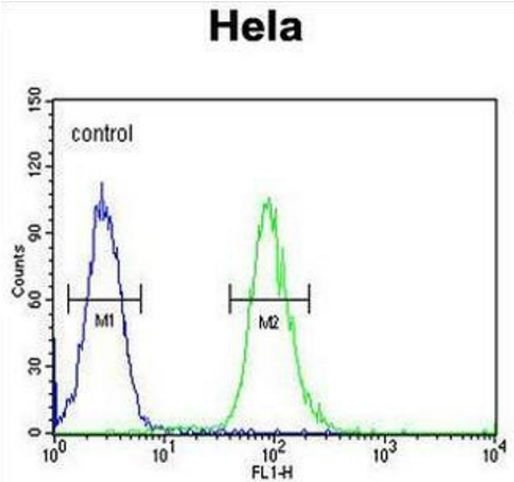
Alternative Name:	Claudin-7 / CLDN7 (CLDN7 Products)
Background:	<p>This gene encodes a member of the claudin family. Claudins are integral membrane proteins and components of tight junction strands. Tight junction strands serve as a physical barrier to prevent solutes and water from passing freely through the paracellular space between epithelial or endothelial cell sheets, and also play critical roles in maintaining cell polarity and signal transductions. Differential expression of this gene has been observed in different types of malignancies, including breast cancer, ovarian cancer, hepatocellular carcinomas, urinary tumors, prostate cancer, lung cancer, head and neck cancers, thyroid carcinomas, etc..</p> <p>Alternatively spliced transcript variants encoding different isoforms have been found.Synonyms: CEPTRL2, CLDN-7, CPETRL2</p>
Molecular Weight:	22418 Da
Gene ID:	1366
NCBI Accession:	NP_001171951
Pathways:	Hepatitis C

Application Details

Application Notes:	Optimal working dilution should be determined by the investigator.
Restrictions:	For Research Use only

Handling

Format:	Liquid
Concentration:	0.25 mg/mL
Buffer:	PBS, 0.09 % (W/V) sodium azide
Preservative:	Sodium azide
Precaution of Use:	This product contains sodium azide: a POISONOUS AND HAZARDOUS SUBSTANCE which should be handled by trained staff only.
Handling Advice:	Avoid repeated freezing and thawing.
Storage:	4 °C/-20 °C
Storage Comment:	Store undiluted at 2-8 °C for one month or (in aliquots) at -20 °C for longer.



Flow Cytometry

Image 1. CLDN7 Antibody (C-term) flow cytometric analysis of Hela cells (right histogram) compared to a negative control cell (left histogram).FITC-conjugated goat-anti-rabbit secondary antibodies were used for the analysis.

Immunohistochemistry (Paraffin-embedded Sections)

Image 2. CLDN7 antibody (C-term) immunohistochemistry analysis in formalin fixed and paraffin embedded human prostate carcinoma followed by peroxidase conjugation of the secondary antibody and DAB staining. This data demonstrates the use of the CLDN7 antibody (C-term) for immunohistochemistry. Clinical relevance has not been evaluated.

Western Blotting

Image 3. CLDN7 Antibody (C-term) western blot analysis in Hela cell line lysates (35µg/lane).This demonstrates the CLDN7 antibody detected the CLDN7 protein (arrow).