

Datasheet for ABIN951553
anti-CLDN8 antibody (Middle Region)[Go to Product page](#)

2 Images

Overview

Quantity:	0.4 mL
Target:	CLDN8
Binding Specificity:	AA 146-175, Middle Region
Reactivity:	Human
Host:	Rabbit
Clonality:	Polyclonal
Conjugate:	This CLDN8 antibody is un-conjugated
Application:	Western Blotting (WB), Flow Cytometry (FACS), Enzyme Immunoassay (EIA)

Product Details

Immunogen:	KLH conjugated synthetic peptide between 146~175 amino acids from the Center region of human CLDN8
Isotype:	Ig Fraction
Specificity:	This antibody reacts to CLDN8.
Cross-Reactivity (Details):	Species reactivity (tested):Human.
Purification:	Affinity chromatography on Protein A

Target Details

Target:	CLDN8
Alternative Name:	Claudin-8 / CLDN8 (CLDN8 Products)

Target Details

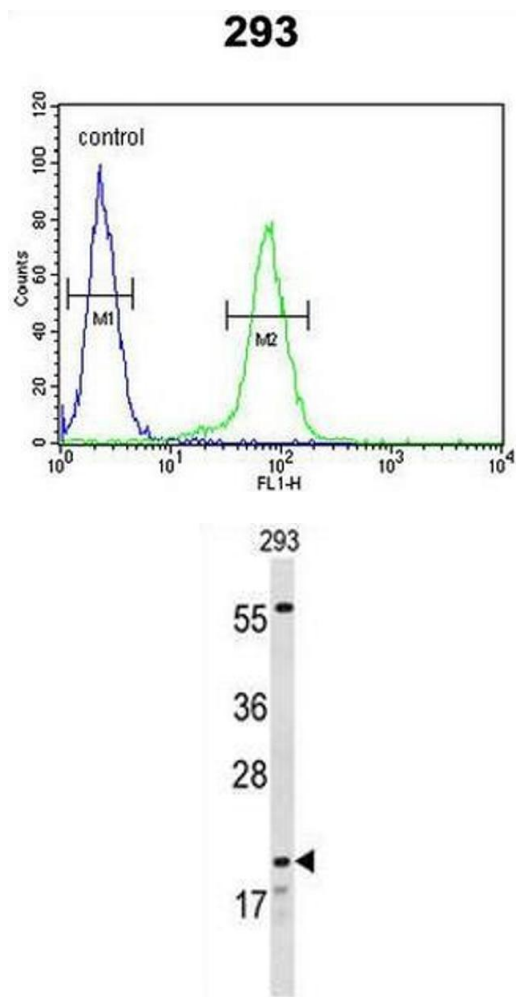
Background:	CLDN8 is components of epithelial cell tight junctions. Tight junctions regulate movement of solutes and ions through the paracellular space and prevent mixing of proteins and lipids in the outer leaflet of the apical and basolateral plasma membrane domains.Synonyms: PRO1573, UNQ779
Molecular Weight:	24845 Da
Gene ID:	9073
NCBI Accession:	NP_955360
Pathways:	Hepatitis C

Application Details

Application Notes:	Optimal working dilution should be determined by the investigator.
Restrictions:	For Research Use only

Handling

Format:	Liquid
Concentration:	0.25 mg/mL
Buffer:	PBS, 0.09 % (W/V) sodium azide
Preservative:	Sodium azide
Precaution of Use:	This product contains sodium azide: a POISONOUS AND HAZARDOUS SUBSTANCE which should be handled by trained staff only.
Handling Advice:	Avoid repeated freezing and thawing.
Storage:	4 °C/-20 °C
Storage Comment:	Store undiluted at 2-8 °C for one month or (in aliquots) at -20 °C for longer.



Flow Cytometry

Image 1. CLDN8 Antibody (Center) flow cytometric analysis of 293 cells (right histogram) compared to a negative control cell (left histogram). FITC-conjugated goat-anti-rabbit secondary antibodies were used for the analysis.

Western Blotting

Image 2. Western blot analysis of CLDN8 Antibody (Center) in 293 cell line lysates (35µg/lane). CLDN8 (arrow) was detected using the purified Pab.