

Datasheet for ABIN951557

anti-CLCNKB antibody (N-Term)



[Go to Product page](#)

1 Image

Overview

Quantity:	0.4 mL
Target:	CLCNKB
Binding Specificity:	AA 10-40, N-Term
Reactivity:	Human, Mouse
Host:	Rabbit
Clonality:	Polyclonal
Conjugate:	This CLCNKB antibody is un-conjugated
Application:	Western Blotting (WB), Enzyme Immunoassay (EIA)

Product Details

Immunogen:	KLH conjugated synthetic peptide between 10-40 amino acids from the N-terminal region of human CLCNKB
Isotype:	Ig Fraction
Specificity:	This antibody reacts to CLCNKB.
Cross-Reactivity (Details):	Species reactivity (tested):Mouse.
Purification:	Affinity chromatography on Protein A

Target Details

Target:	CLCNKB
Alternative Name:	CLCNKB (CLCNKB Products)

Target Details

Background: The protein encoded by this gene is a member of the family of voltage-gated chloride channels. Chloride channels have several functions, including the regulation of cell volume, membrane potential stabilization, signal transduction and transepithelial transport. This gene is expressed predominantly in the kidney and may be important for renal salt reabsorption. Mutations in this gene are associated with autosomal recessive Bartter syndrome type 3 (BS3). Alternatively spliced transcript variants encoding different isoforms have been found for this gene. [provided by RefSeq].Synonyms: Chloride channel Kb, Chloride channel protein ClC-Kb, ClC-K2, ClCK2

Molecular Weight: 75446 Da

Gene ID: 1188

NCBI Accession: [NP_000076](#)

Application Details

Application Notes: Optimal working dilution should be determined by the investigator.

Restrictions: For Research Use only

Handling

Format: Liquid

Concentration: 0.25 mg/mL

Buffer: PBS, 0.09 % (W/V) sodium azide

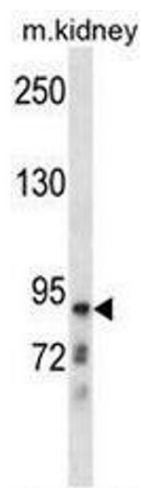
Preservative: Sodium azide

Precaution of Use: This product contains sodium azide: a POISONOUS AND HAZARDOUS SUBSTANCE which should be handled by trained staff only.

Handling Advice: Avoid repeated freezing and thawing.

Storage: 4 °C/-20 °C

Storage Comment: Store undiluted at 2-8 °C for one month or (in aliquots) at -20 °C for longer.



Western Blotting

Image 1. CLCNKB Antibody (N-term) western blot analysis in mouse kidney tissue lysates (35µg/lane). This demonstrates the CLCNKB antibody detected the CLCNKB protein (arrow).