

Datasheet for ABIN951558
**anti-Claudin 22 (CLDN22) (AA 97-126), (Middle Region)
antibody**

[Go to Product page](#)

3 Images

Overview

Quantity:	0.4 mL
Target:	Claudin 22 (CLDN22)
Binding Specificity:	AA 97-126, Middle Region
Reactivity:	Human, Mouse
Host:	Rabbit
Clonality:	Polyclonal
Conjugate:	Un-conjugated
Application:	Western Blotting (WB), Flow Cytometry (FACS), Enzyme Immunoassay (EIA)

Product Details

Immunogen:	KLH conjugated synthetic peptide between 97-126 amino acids from the Central region of human CLDN22
Isotype:	Ig Fraction
Specificity:	This antibody recognizes CLDN22 (Center).
Cross-Reactivity (Details):	Species reactivity (tested): Human and Mouse.
Purification:	Protein A column, followed by peptide affinity purification

Target Details

Target:	Claudin 22 (CLDN22)
Alternative Name:	CLDN22 (CLDN22 Products)

Target Details

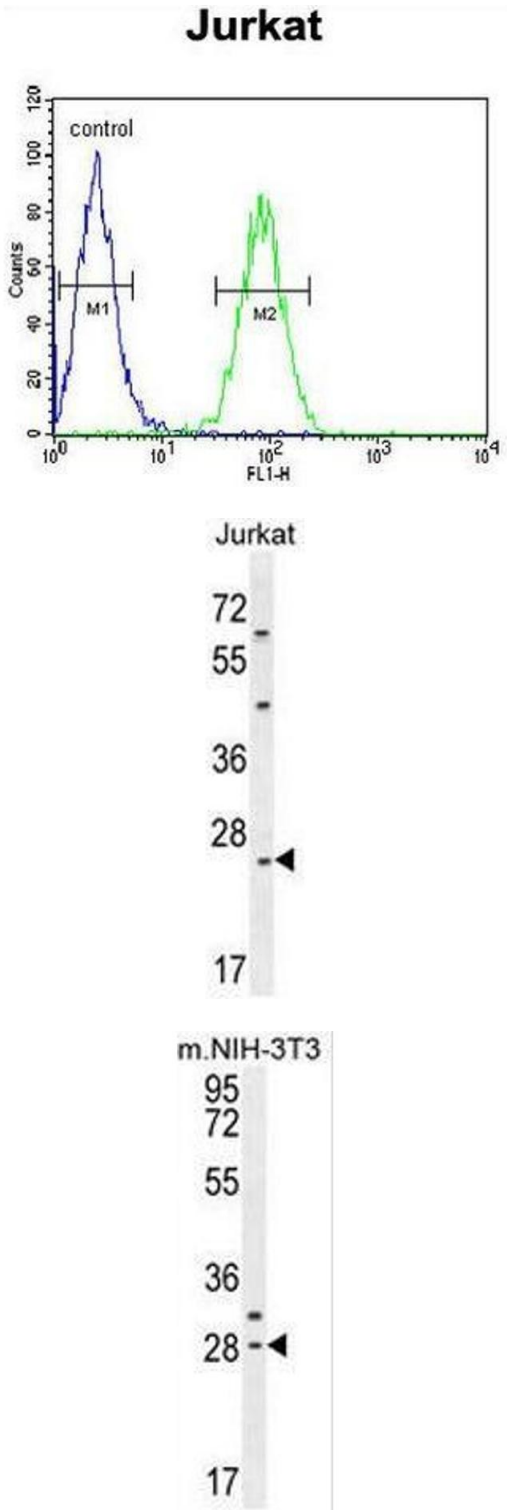
Background:	This gene encodes a member of the claudin family. Claudins are integral membrane proteins and components of tight junction strands. Tight junction strands serve as a physical barrier to prevent solutes and water from passing freely through the paracellular space between epithelial or endothelial cell sheets, and also play critical roles in maintaining cell polarity and signal transductions. This gene is intronless and overlaps the 3' UTR of the WWC2 gene (GeneID: 80014) on the opposite strand.Synonyms: Claudin-22
Molecular Weight:	24509 Da
Gene ID:	53842
NCBI Accession:	NP_001104789
Pathways:	Cell-Cell Junction Organization , Hepatitis C

Application Details

Application Notes:	Optimal working dilution should be determined by the investigator.
Restrictions:	For Research Use only

Handling

Format:	Liquid
Concentration:	0.25 mg/mL
Buffer:	PBS, 0.09 % (W/V) Sodium Azide
Preservative:	Sodium azide
Precaution of Use:	This product contains sodium azide: a POISONOUS AND HAZARDOUS SUBSTANCE which should be handled by trained staff only.
Handling Advice:	Avoid repeated freezing and thawing.
Storage:	4 °C/-20 °C
Storage Comment:	Store undiluted at 2-8 °C for one month or (in aliquots) at -20 °C for longer.



Flow Cytometry

Image 1. CLDN22 Antibody (Center) flow cytometric analysis of Jurkat cells (right histogram) compared to a negative control cell (left histogram).FITC-conjugated goat-anti-rabbit secondary antibodies were used for the analysis.

Western Blotting

Image 2. CLDN22 Antibody (Center) western blot analysis in Jurkat cell line lysates (35µg/lane).This demonstrates the CLDN22 antibody detected the CLDN22 protein (arrow).

Western Blotting

Image 3. CLDN22 Antibody (Center) western blot analysis in mouse NIH-3T3 cell line lysates (35µg/lane).This demonstrates the CLDN22 antibody detected the CLDN22 protein (arrow).