

Datasheet for ABIN951568  
**anti-CLIC5 antibody**



[Go to Product page](#)

1 Image

## Overview

|              |  |
|--------------|--|
| Quantity:    | 50 µg  |
| Target:      | CLIC5  |
| Reactivity:  | Human  |
| Host:        | Mouse  |
| Clonality:   | Monoclonal   |
| Conjugate:   | This CLIC5 antibody is un-conjugated   |
| Application: | Western Blotting (WB), Immunohistochemistry (Paraffin-embedded Sections) (IHC (p)), Enzyme Immunoassay (EIA) |

## Product Details

|                             |  |
|-----------------------------|--|
| Immunogen:                  | CLIC5 (NP_058625, 91 a.a. ~ 191 a.a) partial recombinant protein with GST tag. |
| Clone:                      | 1-00E-006  |
| Isotype:                    | IgG2a  |
| Specificity:                | Recognizes Human CLIC5   |
| Cross-Reactivity (Details): | Species reactivity (tested):Human.   |
| Purification:               | Protein A Chromatography   |

## Target Details

|                   |  |
|-------------------|--|
| Target:           | CLIC5                                    |
| Alternative Name: | CLIC5 ( <a href="#">CLIC5 Products</a> ) |

## Target Details

|                 |   |
|-----------------|---|
| Background:     | Chloride intracellular channels are involved in chloride ion transport within various subcellular compartments. CLIC5 specifically associates with the cytoskeleton of placenta microvilli.Synonyms: Chloride intracellular channel protein 5 |
| Gene ID:        | 53405   |
| NCBI Accession: | <a href="#">NP_001107558</a>  |
| UniProt:        | <a href="#">Q9NZA1</a>  |
| Pathways:       | <a href="#">Sensory Perception of Sound</a>   |

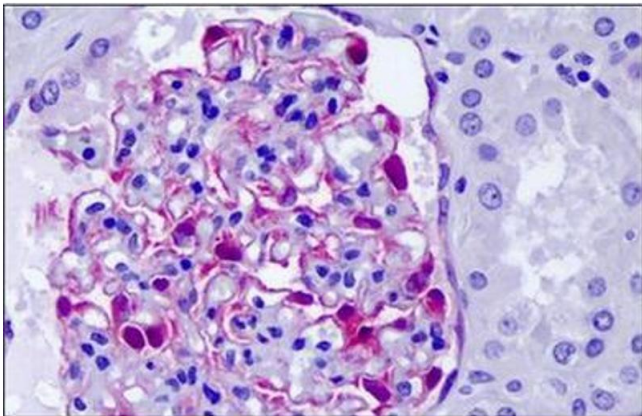
## Application Details

|                    |  |
|--------------------|--|
| Application Notes: | Optimal working dilution should be determined by the investigator. |
| Restrictions:      | For Research Use only  |

## Handling

|                  |   |
|------------------|---|
| Concentration:   | 0.35 mg/mL  |
| Buffer:          | PBS, pH 7.2   |
| Handling Advice: | Avoid repeated freezing and thawing.  |
| Storage:         | 4 °C/-20 °C   |
| Storage Comment: | Store the antibody undiluted at 2-8 °C for one month or (in aliquots) at -20 °C for longer. |

## Images



### Immunohistochemistry

Image 1.