

Datasheet for ABIN951569
anti-CLIC6 antibody (Middle Region)

3 Images

[Go to Product page](#)

Overview

Quantity:	0.4 mL
Target:	CLIC6
Binding Specificity:	AA 546-573, Middle Region
Reactivity:	Human
Host:	Rabbit
Clonality:	Polyclonal
Conjugate:	This CLIC6 antibody is un-conjugated
Application:	Western Blotting (WB), Flow Cytometry (FACS), Immunohistochemistry (Paraffin-embedded Sections) (IHC (p)), Enzyme Immunoassay (EIA)

Product Details

Immunogen:	KLH conjugated synthetic peptide between 546-573 amino acids from the Central region of human CLIC6
Isotype:	Ig Fraction
Specificity:	This antibody reacts to CLIC6.
Cross-Reactivity (Details):	Species reactivity (tested):Human.
Purification:	Affinity chromatography on Protein A

Target Details

Target:	CLIC6
---------	-------

Target Details

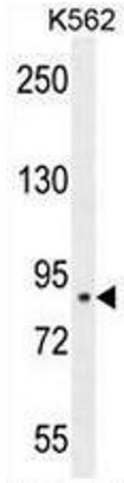
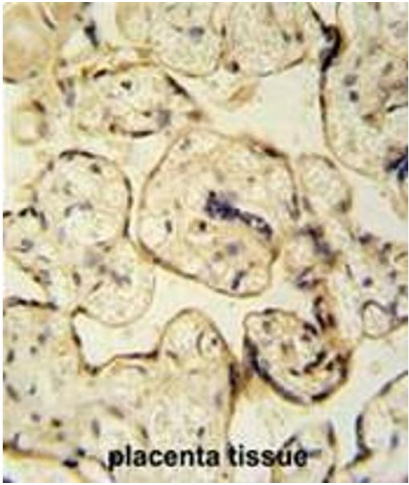
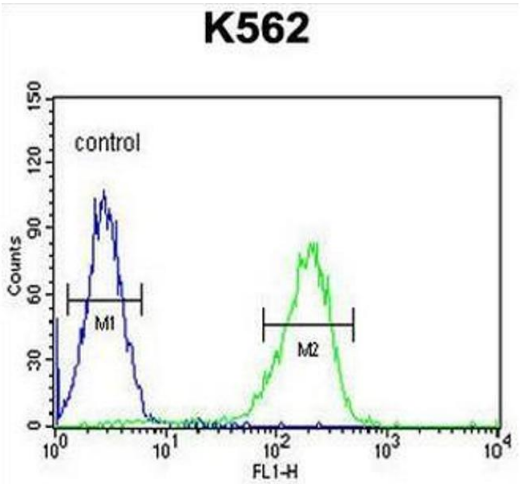
Alternative Name:	CLIC6 (CLIC6 Products)
Background:	CLIC6 is a member of the chloride intracellular channel family of proteins. The gene is part of a large triplicated region found on chromosomes 1, 6, and 21. An alternatively spliced transcript variant has been described, but its biological validity has not been determined. Synonyms: CLIC1L, Chloride intracellular channel protein 6
Molecular Weight:	73012 Da
Gene ID:	54102
NCBI Accession:	NP_444507

Application Details

Application Notes:	Optimal working dilution should be determined by the investigator.
Restrictions:	For Research Use only

Handling

Format:	Liquid
Concentration:	0.25 mg/mL
Buffer:	PBS, 0.09 % (W/V) sodium azide
Preservative:	Sodium azide
Precaution of Use:	This product contains sodium azide: a POISONOUS AND HAZARDOUS SUBSTANCE which should be handled by trained staff only.
Handling Advice:	Avoid repeated freezing and thawing.
Storage:	4 °C/-20 °C
Storage Comment:	Store undiluted at 2-8 °C for one month or (in aliquots) at -20 °C for longer.



Flow Cytometry

Image 1. CLIC6 Antibody (Center) flow cytometric analysis of K562 cells (right histogram) compared to a negative control cell (left histogram). FITC-conjugated goat-anti-rabbit secondary antibodies were used for the analysis.

Immunohistochemistry (Paraffin-embedded Sections)

Image 2. CLIC6 antibody (Center) immunohistochemistry analysis in formalin fixed and paraffin embedded human placenta tissue tissue followed by peroxidase conjugation of the secondary antibody and DAB staining. This data demonstrates the use of the CLIC6 antibody (Center) for immunohistochemistry. Clinical relevance has not been evaluated.

Western Blotting

Image 3. CLIC6 Antibody (Center) western blot analysis in K562 cell line lysates (35µg/lane). This demonstrates the CLIC6 antibody detected the CLIC6 protein (arrow).