



Datasheet for ABIN951571
anti-CLIP4 antibody (Middle Region)



[Go to Product page](#)

1 Image

Overview

Quantity:	0.4 mL
Target:	CLIP4
Binding Specificity:	AA 332-361, Middle Region
Reactivity:	Human
Host:	Rabbit
Clonality:	Polyclonal
Conjugate:	This CLIP4 antibody is un-conjugated
Application:	Western Blotting (WB), Enzyme Immunoassay (EIA)

Product Details

Immunogen:	KLH conjugated synthetic peptide between 332-361 amino acids from the Central region of human CLIP4
Isotype:	Ig Fraction
Specificity:	This antibody reacts to CLIP4.
Cross-Reactivity (Details):	Species reactivity (tested):Human.
Purification:	Affinity chromatography on Protein A

Target Details

Target:	CLIP4
Alternative Name:	CLIP4 (CLIP4 Products)

Target Details

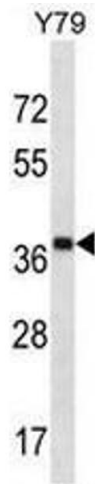
Background:	UBASH3A, ubiquitin associated and SH3 domain containing, A, interferes with CBL-mediated down-regulation and degradation of receptor-type tyrosine kinases. Promotes accumulation of activated target receptors, such as T-cell receptors, EGFR and PDGFRB, on the cell surface (referenced from Swiss Prot).Synonyms: CAP-Gly domain-containing linker protein 4, RSNL2, Restin-like protein 2
Molecular Weight:	37kd Isoform 4. 76317 Da
Gene ID:	79745
NCBI Accession:	NP_078968
Pathways:	SARS-CoV-2 Protein Interactome

Application Details

Application Notes:	Optimal working dilution should be determined by the investigator.
Restrictions:	For Research Use only

Handling

Format:	Liquid
Concentration:	0.25 mg/mL
Buffer:	PBS, 0.09 % (W/V) sodium azide
Preservative:	Sodium azide
Precaution of Use:	This product contains sodium azide: a POISONOUS AND HAZARDOUS SUBSTANCE which should be handled by trained staff only.
Handling Advice:	Avoid repeated freezing and thawing.
Storage:	4 °C/-20 °C
Storage Comment:	Store undiluted at 2-8 °C for one month or (in aliquots) at -20 °C for longer.



Western Blotting

Image 1. CLIP4 Antibody (Center) western blot analysis in Y79 cell line lysates (35µg/lane). This demonstrates the CLIP4 antibody detected the CLIP4 protein (arrow).