



[Go to Product page](#)

Datasheet for ABIN951573
anti-IREM1 antibody (N-Term)

3 Images

Overview

Quantity:	0.4 mL
Target:	IREM1
Binding Specificity:	AA 63-92, N-Term
Reactivity:	Human
Host:	Rabbit
Clonality:	Polyclonal
Conjugate:	This IREM1 antibody is un-conjugated
Application:	Western Blotting (WB), Flow Cytometry (FACS), Immunohistochemistry (Paraffin-embedded Sections) (IHC (p)), Enzyme Immunoassay (EIA)

Product Details

Immunogen:	KLH conjugated synthetic peptide between 63~92 amino acids from the N-terminal region of human CLM1
Isotype:	Ig Fraction
Specificity:	This antibody reacts to CLM1.
Cross-Reactivity (Details):	Species reactivity (tested):Human.
Purification:	Affinity chromatography on Protein A

Target Details

Target:	IREM1
---------	-------

Target Details

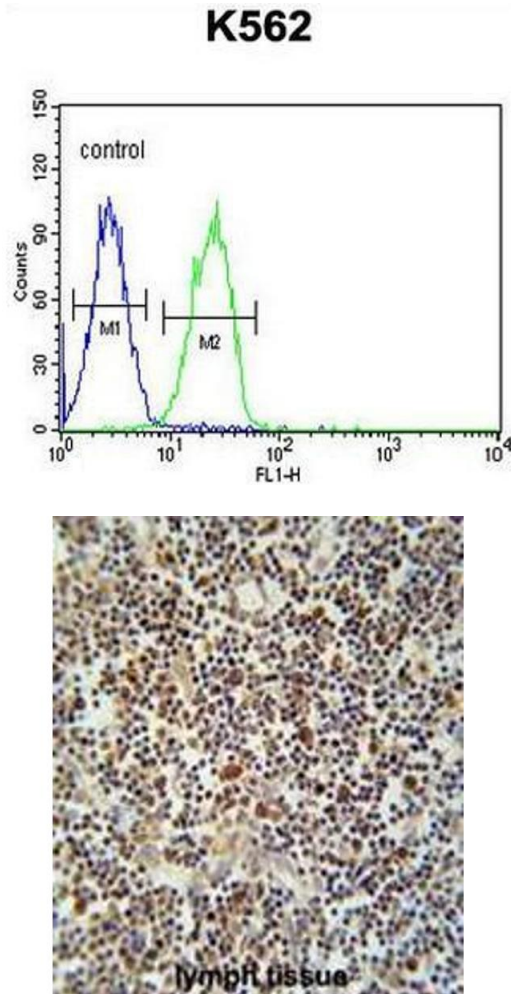
Alternative Name:	CLM1 (IREM1 Products)
Background:	CLM1 is an inhibitory receptor of the Ig superfamily expressed on myeloid cells. It mediates negative regulatory signals by recruiting SHP1 (PTPN6, MIM 176883) or SHIP. Synonyms: CD300 antigen-like family member F, CD300F, CD300LF, CD_antigen=CD300f, CLM-1, CMRF35-like molecule 1, Flags: Precursor, IGSF13, IREM-1, IREM1, IgSF13, Immune receptor expressed on myeloid cells 1, Immunoglobulin superfamily member 13, NK inhibitory receptor, NKIR, UNQ3105/PRO10111
Molecular Weight:	32335 Da
Gene ID:	146722
NCBI Accession:	NP_620587

Application Details

Application Notes:	Optimal working dilution should be determined by the investigator.
Restrictions:	For Research Use only

Handling

Format:	Liquid
Concentration:	0.25 mg/mL
Buffer:	PBS, 0.09 % (W/V) sodium azide
Preservative:	Sodium azide
Precaution of Use:	This product contains sodium azide: a POISONOUS AND HAZARDOUS SUBSTANCE which should be handled by trained staff only.
Handling Advice:	Avoid repeated freezing and thawing.
Storage:	4 °C/-20 °C
Storage Comment:	Store undiluted at 2-8 °C for one month or (in aliquots) at -20 °C for longer.

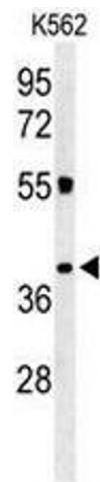


Flow Cytometry

Image 1. CLM1 Antibody (N-term) flow cytometric analysis of K562 cells (right histogram) compared to a negative control cell (left histogram). FITC-conjugated goat-anti-rabbit secondary antibodies were used for the analysis.

Immunohistochemistry (Paraffin-embedded Sections)

Image 2. CLM1 Antibody (N-term) immunohistochemistry analysis in formalin fixed and paraffin embedded human lymph tissue followed by peroxidase conjugation of the secondary antibody and DAB staining. This data demonstrates the use of the CLM1 Antibody (N-term) for immunohistochemistry. Clinical relevance has not been evaluated.



Western Blotting

Image 3. Western blot analysis of CLM1 Antibody (N-term) in K562 cell line lysates (35µg/lane). CLM1 (arrow) was detected using the purified Pab.