

Datasheet for ABIN951581
anti-CLPX antibody (C-Term)[Go to Product page](#)

4 Images

Overview

| | |
|----------------------|---|
| Quantity: | 0.4 mL |
| Target: | CLPX |
| Binding Specificity: | AA 452-481, C-Term |
| Reactivity: | Human, Mouse |
| Host: | Rabbit |
| Clonality: | Polyclonal |
| Conjugate: | This CLPX antibody is un-conjugated |
| Application: | Western Blotting (WB), Flow Cytometry (FACS), Immunohistochemistry (Paraffin-embedded Sections) (IHC (p)), Enzyme Immunoassay (EIA) |

Product Details

| | |
|-----------------------------|---|
| Immunogen: | KLH conjugated synthetic peptide between 452-481 amino acids from the C-terminal region of human CLPX |
| Isotype: | Ig Fraction |
| Specificity: | This antibody reacts to CLPX. |
| Cross-Reactivity (Details): | Species reactivity (tested): Human and Mouse. |
| Purification: | Affinity chromatography on Protein A |

Target Details

| | |
|---------|------|
| Target: | CLPX |
|---------|------|

Target Details

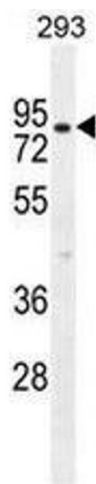
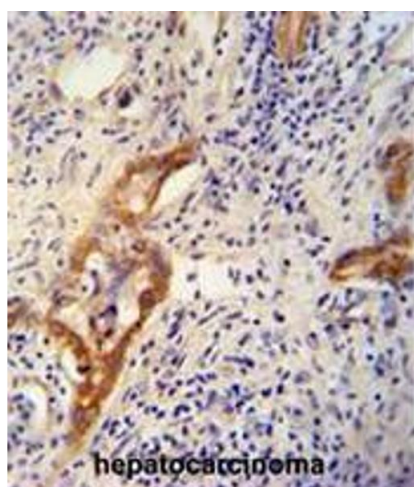
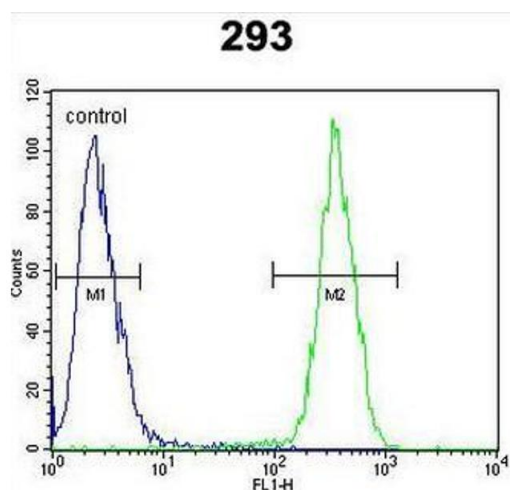
| | |
|-------------------|---|
| Alternative Name: | CLPX (CLPX Products) |
| Background: | ATP-dependent specificity component of the Clp protease. It directs the protease to specific substrates. Can perform chaperone functions in the absence of clpP (By similarity).Synonyms: ATP-dependent Clp protease ATP-binding subunit clpX-like, mitochondrial |
| Molecular Weight: | 69224 Da |
| Gene ID: | 10845 |
| NCBI Accession: | NP_006651 |

Application Details

| | |
|--------------------|--|
| Application Notes: | Optimal working dilution should be determined by the investigator. |
| Restrictions: | For Research Use only |

Handling

| | |
|--------------------|--|
| Format: | Liquid |
| Concentration: | 0.25 mg/mL |
| Buffer: | PBS, 0.09 % (W/V) sodium azide |
| Preservative: | Sodium azide |
| Precaution of Use: | This product contains sodium azide: a POISONOUS AND HAZARDOUS SUBSTANCE which should be handled by trained staff only. |
| Handling Advice: | Avoid repeated freezing and thawing. |
| Storage: | 4 °C/-20 °C |
| Storage Comment: | Store undiluted at 2-8 °C for one month or (in aliquots) at -20 °C for longer. |



Flow Cytometry

Image 1. CLPX Antibody (C-term) flow cytometric analysis of 293 cells (right histogram) compared to a negative control cell (left histogram). FITC-conjugated goat-anti-rabbit secondary antibodies were used for the analysis.

Immunohistochemistry (Paraffin-embedded Sections)

Image 2. CLPX antibody (C-term) immunohistochemistry analysis in formalin fixed and paraffin embedded human hepatocarcinoma followed by peroxidase conjugation of the secondary antibody and DAB staining. This data demonstrates the use of the CLPX antibody (C-term) for immunohistochemistry. Clinical relevance has not been evaluated.

Western Blotting

Image 3. CLPX Antibody (C-term) western blot analysis in 293 cell line lysates (35µg/lane). This demonstrates the CLPX antibody detected the CLPX protein (arrow).

Please check the [product details page](#) for more images. Overall 4 images are available for ABIN951581.