

Datasheet for ABIN951583
anti-CNDP1 antibody (C-Term)

3 Images

[Go to Product page](#)

Overview

Quantity:	0.4 mL
Target:	CNDP1
Binding Specificity:	AA 422-451, C-Term
Reactivity:	Human
Host:	Rabbit
Clonality:	Polyclonal
Conjugate:	This CNDP1 antibody is un-conjugated
Application:	Western Blotting (WB), Flow Cytometry (FACS), Immunohistochemistry (Paraffin-embedded Sections) (IHC (p)), Enzyme Immunoassay (EIA)

Product Details

Immunogen:	KLH conjugated synthetic peptide between 422~451 amino acids from the C-terminal region of human CNDP1
Isotype:	Ig Fraction
Specificity:	This antibody reacts to CNDP1.
Cross-Reactivity (Details):	Species reactivity (tested):Human.
Purification:	Affinity chromatography on Protein A

Target Details

Target:	CNDP1
---------	-------

Target Details

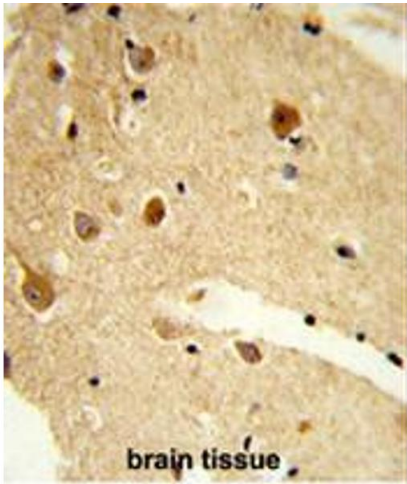
Alternative Name:	CNDP1 (CNDP1 Products)
Background:	CNDP1 encodes a member of the M20 metalloprotease family. The encoded protein is specifically expressed in the brain, is a homodimeric dipeptidase which was identified as human carnosinase. This protein contains trinucleotide (CTG) repeat length polymorphism in the coding region. Synonyms: Beta-Ala-His dipeptidase, CN1, CNDP dipeptidase 1, CPGL2, Carnosine dipeptidase 1, Glutamate carboxypeptidase-like protein 2, Serum carnosinase
Molecular Weight:	56692 Da
Gene ID:	84735
NCBI Accession:	NP_116038

Application Details

Application Notes:	Optimal working dilution should be determined by the investigator.
Restrictions:	For Research Use only

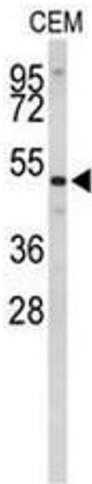
Handling

Format:	Liquid
Concentration:	0.25 mg/mL
Buffer:	PBS, 0.09 % (W/V) sodium azide
Preservative:	Sodium azide
Precaution of Use:	This product contains sodium azide: a POISONOUS AND HAZARDOUS SUBSTANCE which should be handled by trained staff only.
Handling Advice:	Avoid repeated freezing and thawing.
Storage:	4 °C/-20 °C
Storage Comment:	Store undiluted at 2-8 °C for one month or (in aliquots) at -20 °C for longer.



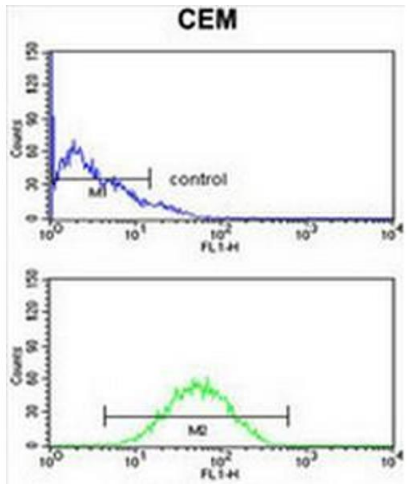
Immunohistochemistry (Paraffin-embedded Sections)

Image 1. Formalin-fixed and paraffin-embedded human brain tissue reacted with CNDP1 Antibody (C-term), which was peroxidase-conjugated to the secondary antibody, followed by DAB staining. This data demonstrates the use of this antibody for immunohistochemistry; clinical relevance has not been evaluated.



Western Blotting

Image 2. Western blot analysis of CNDP1 Antibody (C-term) in CEM cell line lysates (35µg/lane). CNDP1 (arrow) was detected using the purified Pab.



Flow Cytometry

Image 3. CNDP1 Antibody (C-term) flow cytometry analysis of CEM cells (bottom histogram) compared to a negative control cell (top histogram).FITC-conjugated goat-anti-rabbit secondary antibodies were used for the analysis.